



Lorna Ferguson

TRANSITIONS INTO ART SCHOOL

Applying to GSA from school or college
[page 10](#)

CITY GUIDE

Discover Glasgow's creative scene
[page 2](#)

GSA OPEN

Visit us throughout the year
[page 14](#)

DEGREE SHOWS

Showcases in Glasgow and Singapore
[page 22](#)

Welcome

Contents

**ALT CITY GUIDE
TO GLASGOW**
[page 2](#)

**TRANSITIONS IN
TO ART SCHOOL**
[page 10](#)

GSA OPEN
[page 14](#)

GSA SINGAPORE
[page 16](#)

THE GSA HUB
[page 18](#)

GSA IN CHINA
[page 20](#)

DEGREE SHOW
[page 22](#)

**PROGRAMMES,
HOW TO APPLY
AND MORE INFO**
[page 28](#)

Follow us

[@GSofA](#)

[@glasgowschoolart](#)

[/glasgowschoolofart](#)

[/glasgowschoolofart](#)

[/glasgowschoolart](#)



Reid Building exterior,
Degree Show 2016

Reid Building exterior,
Degree Show 2016

A network of indie galleries, clubs, restaurants and bars has created a robust creative scene in Scotland's largest city, where talent is allowed time to flourish.

The Alt City Guide to Glasgow

The Alt City Guide to Glasgow

by Tony Naylor
originally published in The Guardian

Poetry Club, image courtesy SWG3.
Photographer James Anderson



Below: Black Sun Drum Korps - Lady Macbeth part of Buzzcut, Clue Factory.



Richard McMaster, keyboard player in the Glasgow band Golden Teacher, is trying to explain why the city's underground tends to shun media attention. "Scenes get hyped-up and go wrong but, because there's no media here the way there is in London, things happen slowly and organically. There's a community in Glasgow doing things for the right reasons: because they love music." He is instinctively wary: "In many ways, even this discussion makes me feel uncomfortable."

Glasgow may produce a stream of credible crossover stars (Franz Ferdinand, Chvrches or the DJ/producers Jackmaster, Rustie and Hudson Mohawke), but that seems to happen more by accident than

design. Invariably, such break-out stars will have already spent years toiling away in bands and club collectives, in a city where – due to the influence of The Glasgow School of Art – everyone seems to be far more concerned with creating sincere work and having fun, than making money. "Music, the visual arts and that DIY approach go hand-in-hand in Glasgow and you can trace that back to punk," says artist Patrick Jameson, co-founder of the Queens Park Railway Club art space.

All that creative activity teems around an infrastructure of studios, labels, gig promoters and galleries (Green Door, Transmission, Pipe Factory, Night School, Domestic Exile, GLARC,

Roof Garden, All Caps, Outer Zone), which, while often international in scope, nurture Glasgow talent. "If you've an idea, it's easy to participate. There's not much money in Glasgow but there is support," says Richard Chater, co-founder of the label and club collective, Numbers.

Chater also works at the record shop and vinyl distributor Rubadub, a vital resource for the city's labels. These kind of connections are key, says artist Claire Biddles: "The crux of Glasgow DIY is that everyone does everything. You'll go to Mono for a fundraiser for Open House and there'll be bands on who are also artists, writers or bartenders in town. Everything feels joined up."

Below: Buzzcut, Clue Factory.
Photographer *Silvia Ziranek.*



Right: Optimo 20, SWG3
Photographer *Brian Sweeney*



That underground prides itself on its progressive politics, too. There is room for improvement (the feminist music collective OH-141 is pushing for that), but it is striking how many women – So Low's Rebecca Marshall, Fem Bitch Nation, Susannah Stark, LAPS – are prominent on the local experimental electronic music scene.

Glasgow is not without problems. As in most cities, gentrification threatens its creative communities. It is forcing up rents and forcing artists out, hence the migration of creatives to the Southside (south of the river Clyde). Meanwhile, a 3am club curfew means that hard-partying Glasgow has to play cat-and-mouse with the fun police. Such licencing restrictions have spawned a sub-culture of ad hoc gigs in grey area spaces, illegal after-hours events and raucous late-night house parties. "Going back to people's houses and bonding over music is a big part of Glasgow's club culture and how electronic music has developed here," says Chater.

Yet, laments Keith McIvor – aka JD Twitch, half of the city's legendary Optimo DJ duo, club and label – a lot of that "brilliant" talent goes unnoticed: "There is something in the Glasgow mentality. People aren't good at promoting themselves, but it'd be nice if they were a tiny bit more ambitious. There's nothing wrong with doing something amazing that reaches a lot of people. It's not selling out."

He may have a point. But for the time being, if you want to experience the best of Glasgow, you will have to visit it and explore.

Music

Subclub

Like Frankfurt's Robert Johnson or Hamburg's Golden Pudel, the Sub Club (capacity 410) is one of those smaller distinctive European clubs that are sites of pilgrimage for electronic music lovers. Partly, that is due to the high quality of its residents and established nights (Harri & Domenic's veteran Subculture, Sensu, Numbers, Optimo), partly it is down to the clarity of its renowned soundsystem.

22 Jamaica Street
subclub.co.uk



Left & below: Poetry Club, image courtesy SWG3. Photographer James Anderson
Far Left: Optimo DJs Twitch & Wilkes
Photographer Kirsty Anderson/
Herald & Times

The Art School (GSA's Students' Association)

It is not so cheap anymore (regulars can get misty-eyed about the old £1-a-pint days) but this forward-thinking student association building (open to the public) remains not just a great late-bar and club/gig venue, but fundamental to the lively cross-pollination between Glasgow's music and art scenes. McMaster says: "The programming is some of the best going. They're open to experimenting and it's rare I don't end up here once every couple of weeks."

20 Scott Street
theartschool.co.uk

Below: The Art School, Degree Show after party



La Cheetah

This 200-capacity basement below Max's Bar reminds Chater of London's fabled Plastic People. "The sound is impeccable, the lighting's simple and it's got that real close, intimate vibe. Promoters are putting lots of new electronic producers in there but you'll also see people like Theo Parrish, Joy Orbison and Objekt at La Cheetah," he says.

73 Queen Street
lacheetahclub.co.uk



The Poetry Club

Originally created on-the-fly by Turner-nominated artist Jim Lambie, this diminutive venue within the vast SWG3 complex facilitates everything from experimental theatre to Iron Barz' battle-rap sessions. "It's a weird place," enthuses McMaster. "You can have 40 people in and it feels busy."

100 Eastvale Place
thepoetryclub.net

Ad hoc Glasgow

Keep your ear to the ground because, in Glasgow, events are often organised in "outsider venues", says McMaster. From community centres to cricket clubs, promoters are constantly searching for novel environments. For instance, this year, experimental festival Counterflows put Berlin producer Rashad Becker on at Queens Park Bowling Club.

Below: **How To Suffer Politely (And Other Etiquette)**
by Kameelah Janan Rasheed, Transmission Gallery



Celine

Emerging Glasgow artists often exhibit in disused spaces or their own homes, an idea now formalised in the Open House festival. Patrick Jameson, who with Ellis Luxemburg runs the Queens Park Railway Club, an exhibition space in a suburban railway station, says the Celine gallery has taken that approach to its logical conclusion: "Unfunded, off their own backs (sic), they've turned their living room – they still live there – into a contemporary art space, pulling in people from around the world. The last show was a Swiss artist who drew all over the walls of this old Victorian flat. There's a nice energy there and you're aware you're in someone's house. It's like a house party."
493 Victoria Road
galleryceline.com

Transmission Gallery

Forefront of challenging creativity in Glasgow since 1983; Jameson says: "Everybody has had a show at Transmission or some involvement with it." Recently, the Other'd Artist/s explored the experience of black artists in Scotland. For Biddles, the show "mixed an exhibition of work with events and a small zine library, which is typical of the fluidity that thrives in Glasgow". As famously referenced in Franz Ferdinand's Do You Want To, there is usually a Transmission party to accompany its exhibitions too, incorporating performance, music and DJs. The Pipe Factory is another key artists' community where lots of interesting things happen.
28 King Street
transmissiongallery.org



Buzzcut 2017,
Photography by
Silvia Ziranek

Buzzcut

This radical art and theatre collective each spring stages an international festival of performance at the Pearce Institute (in Govan – for Jameson, "an often forgotten working class neighbourhood"), and works hard to engage the local community. For instance, Govan residents were given free entrance to last year's Buzzcut CCA shows. It is involved in numerous other off-beat projects, including plans to place performance artists in late-night club settings and a workshop on audaciousness that will create a one-off live art event in central Glasgow.
glasgowbuzzcut.wordpress.com

Right: Good Press
shop and gallery



Good Press

This year, a two-day festival in April at the Centre for Contemporary Art's, Glasgow Zine Fest (next in April 2018), illustrated the vibrancy of Glasgow's self-publishing scene. "Zine Fest is a key event in the DIY calendar," says Claire Biddles, who recently released a new issue of her "pop crushes" zine, Fuck What You Love. To sample Glasgow's self-published output, head to indie publishing hub Good Press: "It's a great shop which sells zines and puts on small exhibitions and larger events at other venues."
5 St Margaret's Place
goodpressgallery.co.uk

Buzzcut 2017,
Photography by
Silvia Ziranek



Mount Florida Screenings

Mount Florida Studios near Hampden Park stadium hosts workshops and small exhibitions, but, says Jameson (whose Queens Park Railway Club is about to launch its "micro-residencies" series, Ten Days Of Summer), it is, perhaps, most notable for its video screenings, currently taking place monthly at the city centre Gallery of Modern Art (Royal Exchange Square).
Next date: Thurs 13 July, on Facebook



Soundtrack

Listen to SubClub's playlist for the Guardian's alt city guide to Glasgow:

soundcloud.com/subclub87/sets/glasgow-guardian-playlist

Transitions In To Art School

We want to make sure that every young person who has the ability and aspiration to study art, design or architecture gets an equal chance to do so. We want to attract the very best students, regardless of their background.



Transitions In To Art School

Cover collages

The collages on the front and inside covers of this publication, and on these pages, were produced by S5 and S6 students during a weekend workshop with our Widening Participation team.

Students from 18 schools across Glasgow and the West of Scotland participated in a competition to feature on the cover, and the winning entry was created by Lana Ferguson from Auchenhavie Academy.

Participating students attended the following schools: Annan Academy, Auchenhavie Academy, Auchinleck Academy, Coltness High School, Doon Academy, Douglas Ewart High School, Dumbarton Academy, Dumfries Academy, Inverclyde Academy, Kirkintilloch High School, Lesmahagow High School, Lockerbie Academy, Maxwelltown High School, Sanquhar Academy, St Matthew's Academy, St. Andrew's Academy, Stranraer Academy, Whitehill Secondary School

[>>] Watch Transitions In To Art School

There is no single route in to study at GSA. In May 2017, we spoke to students who had arrived at GSA through a variety of paths about how they found the transition, and about the differences between reality and expectations. vimeo.com/219069984



To make sure that happens, we have a dedicated Widening Participation (WP) team. The team works with schools to identify students who have passion, commitment and creative ambition but need additional help to make their application really stand out. We know that some young people might perceive that there are barriers to accessing higher education. For example those who study at a low progression school; are socio-economically disadvantaged; are the first in their family to apply to university; or live in an area where statistically, fewer people go to university.

We also undertake work to encourage an increase in the number of applications and enrolments to GSA from BME (Black and Minority Ethnic) students and those with childhood experience in care. Our team will help young people see that it doesn't matter what their starting point in life is, they have equality of opportunity.

Working across 90 target schools in Glasgow and the West coast of Scotland, 500 young people benefit annually from a wide range of activities that provide specialist, practical interventions and that recognise both the critical role of a strong portfolio of work and the need for young people to build cultural capital to support their application to higher education.

A number of these activities draw on the principles of 'summer school' provision, providing opportunities for young people to experience life on campus, including access to studio and library facilities and mixing with peers from different schools and backgrounds. This work is having a real impact on the young people we work with. Data from 2014/15 showed that 22.2% of Scottish first year entrants to GSA were from the 20% most deprived areas in Scotland. This was the second highest in the Scottish HE sector.

Far Left: Nicola Lyttle, S5
Left: Damiola Ganzallo, S5, featuring works by Christine Neo and Catherine Lafferty, 2014



Jamie Snedden Hulah



Jamie graduated from the Mackintosh School of Architecture in 2016, having been awarded a Fulbright Scholarship in 2014 for social enterprise and becoming the youngest ever Saltire Scholar, an award given to 'the next generation of Scottish business leaders.'

Hulah is a travel technology company offering a virtual personal travel assistant service, like a traditional travel agent but brought up to date... Says Jamie "We listen to what our clients want, build them beautiful, bespoke itineraries, and allow complete trips to be booked in a single transaction on our platform. We specialise in complex itineraries, everything from island-hopping in The Philippines to secluded Greek honeymoons.

"We've been trading for 9 months, have sent customers to over 30 different countries, and recently received financial investment from Travelport, a \$2Bn publicly traded global travel company." hulah.com

Jack McElroy

Year 2 Sculpture and Environmental Art

For the past couple of years it had been a dream for me to secure a place at The Glasgow School of Art and Widening Participation gave me access to opportunities that I otherwise would not have been offered at school or able to afford, which led to me creating a portfolio strong enough to gain entry.

I attended John Paul Academy in Glasgow and being the only Advanced Higher Art candidate I would have felt isolated and not as motivated about applying if it wasn't for the 20 week S6 Portfolio Course offered by Widening Participation. It provided me with the chance to work with other students with similar interests and ambitions, which was highly beneficial as we became strong friends and really encouraged and helped each other throughout the application process.

Group work, collaborations and all important critiques would not have been possible at school as I was the only one and I found that working with others was something that helped me the most.

The S6 Portfolio Course had a big influence on the way in which I make work, as it forced me out of my comfort zone and challenged me to look at things differently. I was able to make work without the restrictions of a

course like Advanced Higher Art or the pressure of ensuring I 'tick the boxes' required for these types of course. Those approaches don't suit the experimental process I go through to make my work.

WP gives you a much more realistic approach in the bridge between school and higher education. The tutors do not tell you what to do, instead they discuss work with you or have group critiques, which allow you to work out for yourself what to do next.

I learned to make good decisions during the course - I think is really important as higher education level studies require you to carry out your own research and work independently. WP was where I was encouraged to consider Sculpture and Environmental Art (SEA). Before that point, I had my heart set on Painting and Printmaking, but my work had changed so much and one of the WP tutors made me realise the potential I had for making lots of really different kinds of work. I am glad as I applied for both, yet only gained an offer from SEA.

I had a mock interview that really prepared me for the admissions process at GSA. I was able to treat my mock as the real thing and I think having this experience making me more relaxed on the day of the actual interview.



Left: Niamh Wright, SS
Below: Alena Barr, SS

Design Innovation GSA students win 1st and 3rd prizes in Design Innovation Plastics Award

Product Design
Engineering students Ellen Briton and Russell Kilgour
Ellen's product, designed to keep children occupied and protected from the sun on car journeys won 1st prize, while Russell Kilgour's new take on a travel camera bag gained 3rd place. They beat almost 170 entries to gain the two awards. GSA alumnus Michael Tougher won the award in 2014, and has since secured support to take his winning music education innovation Soundbops - to market.

Associate Student Scheme

GSA's Associate Student Scheme with Glasgow Clyde College provides dedicated support and additional learning opportunities to around twenty students studying on the HNC Art and Design at the College's Langside campus with the aim of progressing to second year at GSA. With a broad art and design curriculum similar to a Foundation diploma, the HNC attracts a mix of mature students, school leavers and unsuccessful past applicants from Scotland and further afield. Like much of our work with colleges, this partnership with Glasgow Clyde College helps support widening access for a diverse group of learners. All of the undergraduate programmes in the School of Fine Art and School of Design (except Interaction Design and Product Design Engineering) participate in the Scheme with academics contributing to tutorials and visits with students and staff at the College. While the College challenges the students to expand and develop their creative practice through an intense programme of study, the Scheme at GSA focuses on the transition from college to art school. This is achieved through participation in the Year 1 Term 1 FoCI course, dedicated support workshops, library access and borrowing rights, a week-long project at GSA, opportunities to participate in studio teaching at GSA, and more.

Guaranteed an interview for up to three programmes, of the sixteen interviewed for a place for 2017 entry, fourteen were made an offer with at least one successful applicant in each participating academic department. This has exceeded the target for the year and shown the value and potential of this kind of partnership work.

For more information on the Scheme, contact the Progression Manager, Elizabeth Beidler on e.beidler@gsa.ac.uk



Alumni
Stories

Eleanor Young

Fun Makes Good

Fun Makes Good was founded by textile design graduate Eleanor Young in 2009. With a specialism in contemporary patchwork, the studio produces bold, bright, design-led interior products and upholstery as well as large scale bespoke pieces for commercial spaces and the public realm.

Fun Makes Good's distinctive homewares bring joy to a space through an exuberant mix of pattern, texture and colour. Their playful designs combine a love for geometric shapes with a contemporary colour palette and dynamic composition and commissions range from limited edition products, large scale curtains and hangings to murals and public art pieces. funmakesgood.co.uk



**THE GLASGOW
SCHOOL OF ART
OPEN
2017 / 2018**



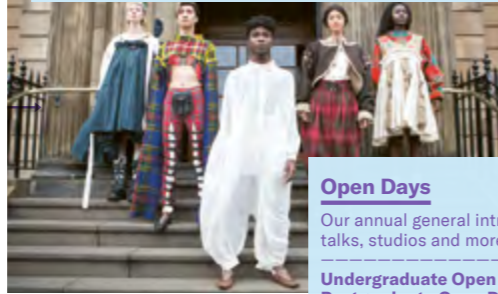
Portfolio Preparation
Part of GSA's Open Studio programme, day, evening and weekend programmes available to develop your portfolio for an art school application.

Portfolio Preparation for 5th Years → 28 October
Portfolio Preparation for 6th Years → 28 October
Twilight Life Drawing for 5th and 6th Years → 3 October

#PortfolioDev #Pre-Application #OpenStudio #SummerSchool

OCTOBER

**Campus Tour
Undergraduate Open Day
Portfolio Preparation
Open Studio
Exhibitions**



NOVEMBER

**Campus Tour
Postgraduate Open Day
Pre-Application Drop-In
Open Studio
Exhibitions**

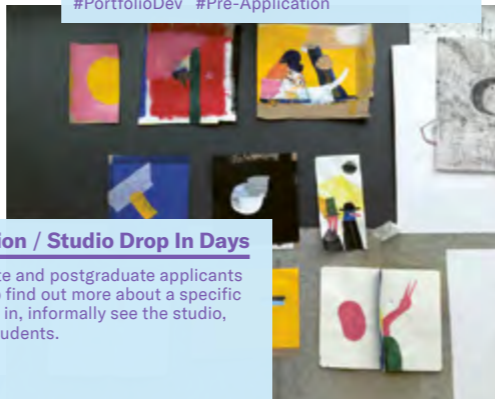
Open Days
Our annual general introduction to the GSA – talks, studios and more.

Undergraduate Open Day → 26 October 2017
Postgraduate Open Day → 25 November 2017
Open House Singapore → January 2018

#PortfolioDev #Pre-Application

DECEMBER

**Campus Tour
Open Studio
Exhibitions**



Pre-Application / Studio Drop In Days
For undergraduate and postgraduate applicants who would like to find out more about a specific programme, drop in, informally see the studio, meet staff and students.

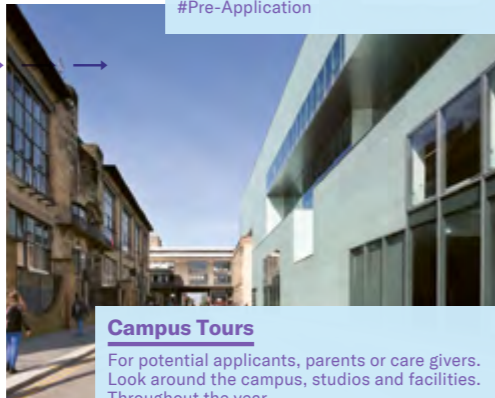
#Pre-Application

JANUARY

**Open House Singapore
Open Studio
Exhibitions**

FEBRUARY

**Campus Tour
Open Studio
Exhibitions**



Campus Tours
For potential applicants, parents or care givers. Look around the campus, studios and facilities. Throughout the year.

#Pre-Application

We Are Open
There's more to choosing your place of study than Open Days. GSA OPEN offers a range of events throughout the year to help you get the right information and support at the right time. Register now. Free but ticketed via eventbrite: www.gsa.ac.uk/gsaOPEN

MARCH

**Campus Tour
Pre-Application Drop-In
Open Studio
Exhibitions**

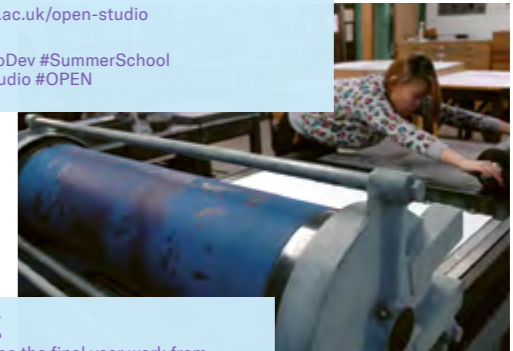
Open Studio
Looking to develop your portfolio for art school entry or learn new skills? Our day, weekend, evening and summer school courses are open to all.

www.gsa.ac.uk/open-studio

#PortfolioDev #SummerSchool #OpenStudio #OPEN

APRIL / MAY

**Open Studio
Exhibitions**



JUNE

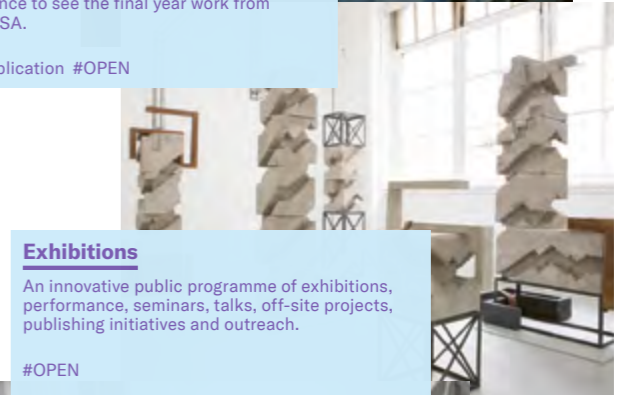
**Undergraduate Degree Show
Open Studio
Exhibitions**

Degree Show
Your chance to see the final year work from across GSA.

#Pre-Application #OPEN

JULY

**Open Studio
Exhibitions**



Exhibitions
An innovative public programme of exhibitions, performance, seminars, talks, off-site projects, publishing initiatives and outreach.

#OPEN

AUGUST

**Portfolio Preparation
Open Studio
Exhibitions**

SEPTEMBER

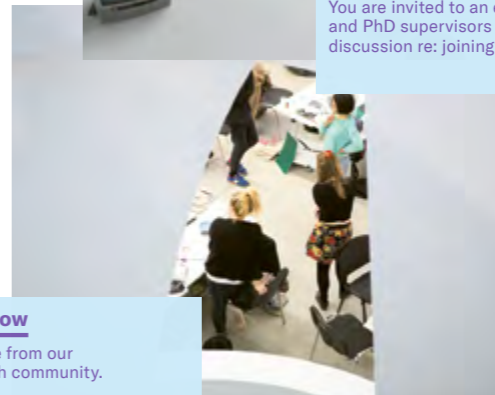
**Graduate Degree Show
Research and Doctoral Studies
Pre-Application Drop-In
Campus Tour
Open Studio
Exhibitions**



Research and Doctoral Studies
You are invited to an evening with GSA's PGT and PhD supervisors for a presentation and discussion re: joining our research community...

Graduate Degree Show
View the annual showcase from our postgraduate and research community.

#Postgraduate #OPEN



Singapore

From September 2012, the GSA has delivered years 3 and 4 of its Bachelor of Art (Hons) Programmes in Communication Design and Interior Design in Singapore, in partnership with the Singapore Institute of Technology (SIT) and Temasek Polytechnic (TP). The programmes enable Diploma students from one of Singapore's Polytechnics to progress from a Diploma to a Bachelor of Arts (Hons) degree.



Students studying in Singapore benefit from not only the same programme of study and award as in the home institution, and resources and equipment according to GSA specifications, but also access to the additional specialist resources, equipment and workshops of TP.

Each student studying in Singapore also has the opportunity to spend four weeks in Scotland at the GSA working directly with their counterparts in the same programmes based in Glasgow. This extra credit-bearing component provides a chance to experience the history of Glasgow and the GSA, of the local cultural and industrial context, and location-specific projects drawing on all of these.

We take a look at just some of the exciting global collaborations and highlights in Singapore from over the last year:

Degree Show Industry Night

Industry Night, an exclusive preview of Degree Show for industry partners saw almost 100 industry partners attend from 52 companies, with several students offered interviews on the night.



Upstarts

Advertising and Marketing Placements

Two GSA Singapore Communication Design graduates were awarded prestigious UPSTARTS placements in July 2017. The programme, run by the Economic Development Board (EDB) and Institute of Advertising, Singapore (IAS) offers the selected graduates a one-year placement with a leading advertising agency with work experience in at least three different departments.

Abdul Rahman will work with the global advertising and marketing agency, Ogilvy & Mather, and Chynna Ang Wan Ting will have a placement with Dentsu Singapore, one of Singapore's top ten creative agencies.

"We are delighted that Abdul Rahman and Chynna Ang Wan Ting, two of our outstanding Communication Design graduates, have been accepted on to this prestigious programme," said Chris Hand, Programme Director at The Glasgow School of Art, Singapore. "I am sure that they will benefit enormously from the experience that working with Ogilvy & Mather and Dentsu Singapore will offer, and it will help them to develop successful careers in the creative industries."

More

For more information visit the site: gsa.ac.uk/singapore



Tokyo Design Week

Pindemic

Amalina Naser (Communication Design, 2017) was invited to exhibit her product range of retro pin-badges at Tokyo Design Week in the last week of October 2016 whilst a year 4 student. Tokyo Design Week is a showcase of design spanning all genres and mediums from kitsch to modern, architecture to furniture, and to forward thinking/near future applications in Design. Pindemic won the Special Jury Award. "Everyone put their best foot forward and it was a pleasure to be in the presence of everyone who cared so much for design" said Amalina.

shop-pindemic.com

Fitch

Hotel Design and Human-centered Design Process

Third-year Interior Design students undertook a three-week project in 2017 with international environmental branding agency Fitch Design. Teams of students engaged with a Fitch signature design method "DELA" (Dreaming – Exploring – Locating – Achieving) which is focused on producing strong, human-centred design outcomes. The students were given two customer profiles from which to identify 'pain points' in a traveller's journey, and via these proposed innovative concepts for the future of hotel design. Two selected groups of finalists presented their solutions to Fitch's Asia CEO Andrew Crombie from which two students were selected for internships.

Kwong Wai Shiu Hospital

Design Innovation Project

A live project with Kwong Wai Shiu Hospital (KWSH) to conceptualise activity / therapy spaces that can stimulate the senses while considering elderly user experiences, nostalgia, accessibility and patient safety.

A collaboration between KWSH, SIT and the GSA, this project allowed students to become immersed into the particular design of the hospital, which is not a text book design. Dr Ow Chee Chung, CEO of Kwong Wai Shiu Hospital said "It is a real space, for real operations, and an actual real redevelopment that is happening on the ground. So (in terms of learning) I think it becomes a lot more meaningful for the students."

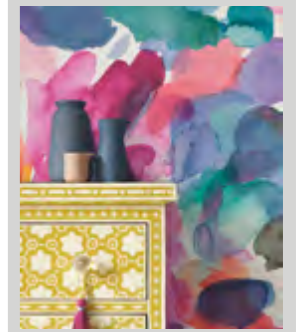
So how has the project benefitted KWSH? "I think my quick answer" said Dr Ow, "is to look at what they have produced which are really solutions that KWSH feel are things that we can implement. And we are serious about really implementing some of them."

Fi Douglas Bluebellgray

Fi Douglas, a graduate of Textile Design, set up Bluebellgray in 2009 with a clear vision and style in mind; her love of colour and all things floral combined with a desire to create unique painterly pieces. These vibrant, oversized water-colour blooms have become a brand signature and sit harmoniously alongside abstract pieces born from Fi's natural painting process. Each design is painted by hand in the Glasgow studio before being printed onto natural cottons and linens using state of the art printing technology. The printing methods used enable every brushstroke and colour to be captured, enhancing the feel of the hand-painted design.

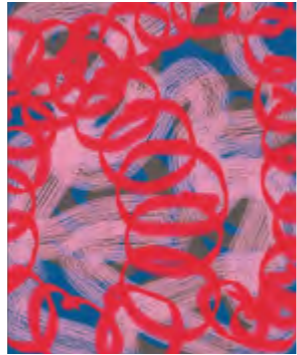
Bluebellgray has grown into one of Scotland's most exciting textile exports, leading the floral trend and being stocked worldwide in the best design boutiques and stores. Fi says "I'm a huge believer of feel good design - if my designs can add a little happiness and brightness to someone's day, then I have achieved what I set out to do with Bluebellgray".

bluebellgray.com

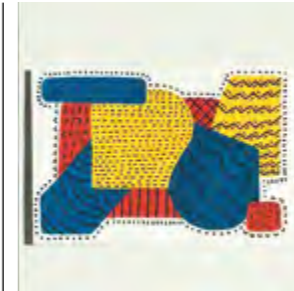
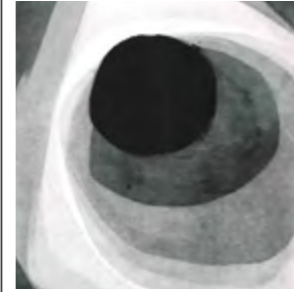
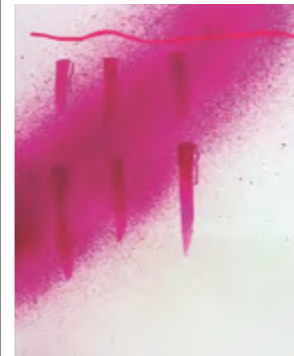
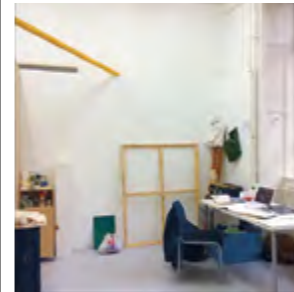
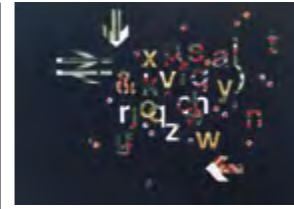


Delve into the GSA Hub, where you will find social media posts from students, staff, alumni friends of, and visitors to the GSA. Scroll down to view more, click on any post for further details. Follow your interests, discover events, exhibitions, artists and designers and more. Get an insight into what it is like to study at GSA, opportunities to get involved, and see what is happening on and off campus right now, among the many locations in which our community live, work and study.

The GSA Hub



www.gsa.ac.uk/thehub



→ Alumni Stories

Catherine MacGruer Catherine MacGruer Textiles

Catherine MacGruer graduated from GSA after specialising in Knitted Textile Design and opened her own studio in the Highlands of Scotland in 2015. Her portfolio of work includes textile design, development, commissions and collaborative projects, as well as her own range of interior and fashion accessories.



Characterised by geometric shapes, meticulously considered compositions and uniquely inspired colour ways, Catherine's signature designs are easily recognisable. There is a strong focus on the relationship between carefully balanced bold shapes, and all of her work is informed by the craft, history of design and new technologies of her industry. Combined with the highest quality materials, Catherine produces beautiful contemporary textile works which are made to be treasured.

Owing to her dedication and talent, Catherine was awarded the New Design Britain Award in 2015. Her work has been on display at the National Gallery of Scotland and is currently stocked in selected design and interior stores including Heal's, where one of her designs was recently selected as one of their 'Heal's 100' iconic designs of the last 100 years.

All products are knitted in the UK using the highest quality Merino wool and hand finished in the studio. Catherine works closely with two small knit facilities in Leicester and Shetland, and she strongly believes in supporting the UK Textile industry and value working with such skilled professionals. catherinemacgruer.com

Above: Line & Block Collection

GSA in China

WeChat ID /glasgowschoolofart

From left to right: Xiaoi Wang (curator), Mrs Zhong, Professor Xiangqun Li, Professor Tom Inns, Professor Yigang Wang, 'East and West Walk Forward: Luxun Academy of Fine Arts (China)', Reid Gallery, GSA Exhibitions (2017)



East and West Walk Forward

A sculpture of Confucius by the leading Chinese artist and President of LAFA, Li Xiangqun, was one of the artworks showcased in a major exhibition in September 2017 at GSA. The 1-metre white bronze sculpture was previously exhibited in the Forbidden City, one of the World's most important and most visited museums, as part of a solo exhibition by Li Xiangqun in November 2016. This was the first ever solo exhibition by a contemporary artist in the Forbidden City.

The exhibition, part of East and West Walk Forward, featured work by 35 artists who also teach at LAFA - and staff from GSA will exhibit for the exhibition at LAFA in 2018.

Left: Professor Xiangqun Li, with his work 'Spiritual Practitioner' (2012), 'East and West Walk Forward: Luxun Academy of Fine Arts (China)', Reid Gallery, GSA Exhibitions (2017)

GSA's archives reveal that GSA hosted visiting Chinese painters from The Central Academy of Fine Arts (CAFA) as far back as 1902. Since 2009 GSA has had a Representative Office in Beijing that supports partnership work in China. Our chosen Chinese partners - Tsinghua University, Lu Xun Academy of Fine Arts (LAFA) and CAFA benefit, as GSA does, from these partnerships through student and staff exchange opportunities, development of curricula and research and participation in joint exhibitions.

Alumni Stories

Michael Tougher Soundbops

Michael graduated from Product Design Engineering in 2015, and during his studies he helped design the Queen's Baton for the Commonwealth Games. Since then he has launched a business to bring one of his GSA projects to the world. Soundbops uses musical building blocks to enable children to learn and play music early. Soundbops has won different awards and funding to take

the product to market and will be launching a Kickstarter in the near future.

Michael says "I have always loved design and investing and the PDE programme fitted me perfectly. GSA have continued to supported me post-graduation, in my Royal Society of Edinburgh Fellowship and with my continuing Designer in Residence role at the School." soundbops.com

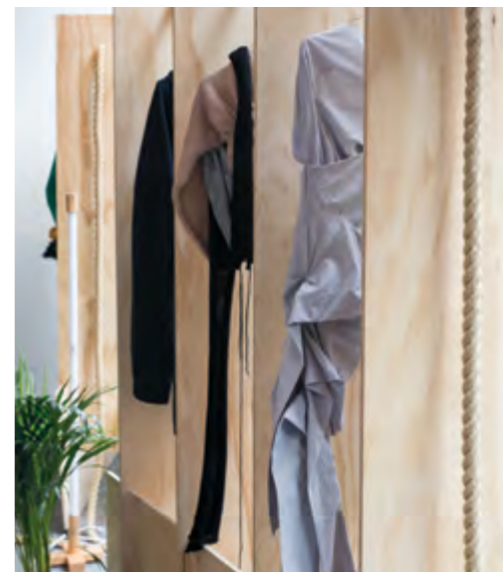


Degree Show

Eclectic, exciting and provocative - the GSA's annual showcases of final year postgraduate and undergraduate work are highlights of Glasgow's cultural calendar, taking over the GSA campus and beyond.



Right: Laser show at Degree Show 2017 street party
Below: MFA Degree Show 2017 at the Clue Factory, Glasgow



Above: Fashion Design work at Degree Show 2017

Paul Hamlyn Foundation Award Lucy Skaer receives award

Painting alumna Lucy Skaer has received a Paul Hamlyn Foundation Award. The £50,000 prize is the largest individual award made to visual artists and composers in the UK, and is designed to give artists the time and freedom to develop their creative ideas.
tinyurl.com/phflucyskaer

Alumni Stories

Cristina Garriga My Bookcase

My Bookcase is a social enterprise founded in 2014 by artist and alumna Cristina Garriga. In 2017, Katie Reid and Julia Doz joined Garriga to expand My Bookcase across the cities of Glasgow, Barcelona and Amsterdam. The project explores the role of the book and its reader in today's society and on the book as a social tool for the exchange of knowledge.

The project's starting point is an online platform, the My Bookcase Platform, where readers open up their personal libraries to share their books in a free and participative way. The initiative is supported by a network of 'Meeting Points'; selected spaces in the city encouraging the sharing of books and encounters between readers.

Cristina says "My Bookcase is a social enterprise that aims to empower the reader by offering a creative space to unfold the knowledge gathered through private readings. Individual knowledge is brought into a shared experience to support collective intelligence."
mybookcase.org



Photographer Pablo Llopis, 2017

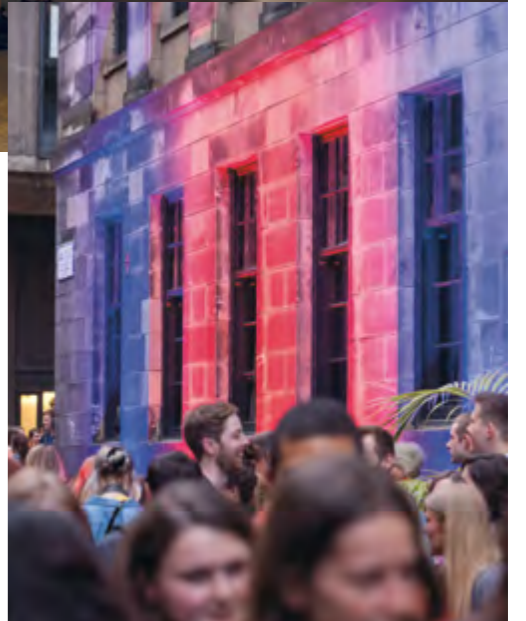


**Jill Todd Photographic Award
Success for
Mads Holm**

2016 Fine Art Photography graduate Mads Holm is the third GSA alumnus to win the award since its foundation in 2010. The annual award provides an opportunity for emerging photographers to showcase a new body of work, and to benefit from the exposure of a gallery show. Mads was also awarded the Danish Embassy Art Prize earlier in the year. www.madsholm.com



Left: Painting & Printmaking student Caitlin Mackenzie at Degree Show 2017
Above: MFA Degree Show 2017 at the Glue Factory



Right: The Art School GSA Students' Association at Degree Show 2017

**→ Alumni
Stories**

Hamish Dobbie

Hamish Dobbie Silversmithing

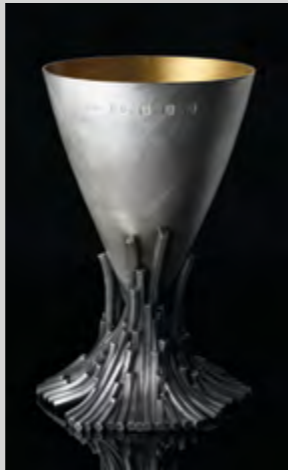
Glasgow-based Silversmith Hamish Dobbie (Silversmithing + Jewellery 2013) creates award winning functional and decorative objects using sterling silver and select pieces of hardwoods.

Hamish utilises advanced technologies such as 3D printing, Welding and CNC milling to create elegant and intricate work inspired by the rugged landscape of Western Scotland. Taking visual inspiration from the landscape of Scotland, which he finds

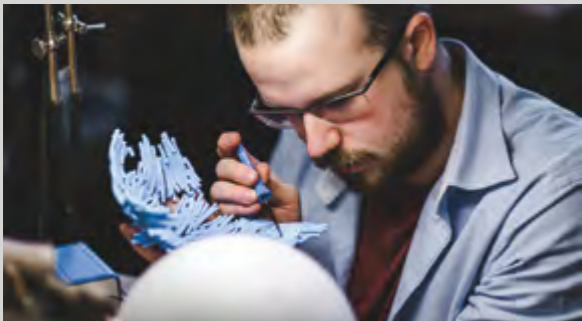
very relaxing despite its 'aggressive' appearance, Hamish contrasts textures and forms with smooth geometric surfaces.

By combing both traditional skills and contemporary techniques, he is able to transform the intricate linear designs, flowing curves and natural forms that inspire his work, into beautiful constructed and sculptural objects.

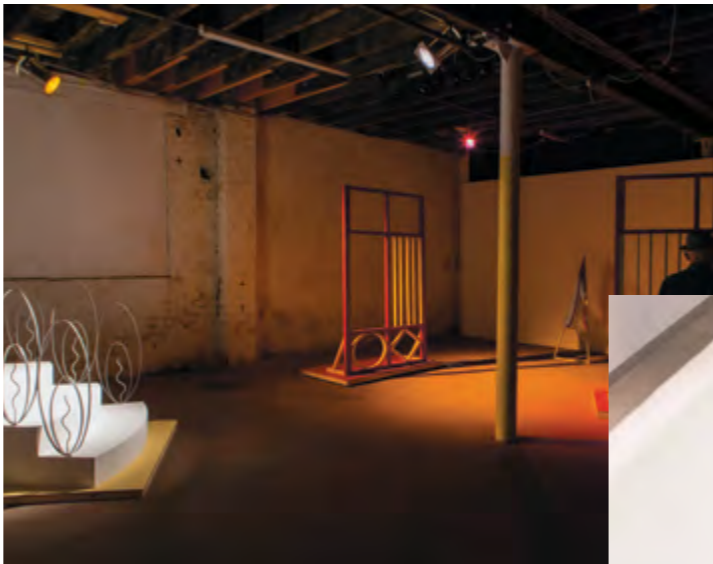
Fingal's Goblet / Hamish Dobbie



Hamish shows his passion for detail, precision and quality craftsmanship that is key to his practice in all of his designs. From a simple pair of study earrings to a complex multi-part jewellery box - each one meticulously hand-finished and wonderfully unique. hamishdobbie.co.uk



Below: MFA Degree Show 2017 at the Glue Factory



Left: Work by Rachel Sharpe at MFA Degree Show 2017

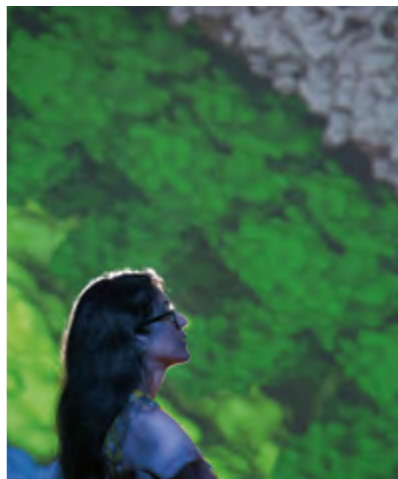
Funding exceeding £600k is awarded by AHRC GSA-led Antimicrobial Resistance research projects

Architecture, design and 3D visualisation/virtual reality expertise at the GSA will partner with interdisciplinary expertise from across the UK to deliver ground-breaking research to help prevent the spread of Antimicrobial Resistance (AMR). The GSA has been successful in attracting support for three different £250,000 research projects, more than any other institution in this round of funding. The projects will see the GSA partnering with colleagues in leading Higher Education institutions from across the UK and with other specialists including Fitzpatrick Referrals Ltd, the practice of Noel Fitzpatrick, Channel 4's Supervet. tinyurl.com/bbcnewsgsaamr

Right: Degree Show 2017 in the Reid Building



Right: MSc Medical Visualisation & Human Anatomy student Naina Nair with her work at Graduate Degree Show 2017



Alumni Stories

Josie Vallely
Josie Vallely
illustration

Josie is a Scottish artist and designer based in Glasgow. Josie studied a masters of Illustration at GSA, creating artist books and drawings exploring illness narratives. Their work encompasses visual arts, research, co-design, graphic design and delivery in the community. A key area of interest is in collaborative projects that explore identity, health, narrative and participation.

An associate service designer and illustrator with the Institute of Research and Innovation (IRISS) Josie delivers participatory design workshops, conducts research, supports co-design and create visual solutions focused on the world of social care.

Previous Illustration clients have included Harper Collins, GCIN, Wildsparks, Woodcraft Folk Scotland, Creative Edinburgh, St Johns Hospice, NHS Lothian, YMCA, Woodcraft Folk, The Clinical Educator, EDUSCi Magazine, and the RSPB. josievallely.com





More Info

More Information



Student Services

www.gsa.ac.uk/studentservices

Accommodation

As Scotland's largest city and with five higher education institutions, Glasgow has an excellent supply of student accommodation, wherever in the city you choose to live. The GSA has two halls of residence, both located within a couple of minutes walk of the main GSA Garnethill Campus.

All applications and allocations for halls of residence are handled via the GSA Accommodation Office. Information on all sites, a guide to applying for a place and an application form are available on the GSA website: www.gsa.ac.uk/accommodation

If you are interested in finding accommodation in the private sector (a private flat or a room in a flat sharing with other students) our Student Welfare Service can provide advice. Contact welfare@gsa.ac.uk for further information.

Learning Support & Development

Help and advice for all students about the process of learning, offering specific support to dyslexic and disabled students and English Language classes and support for international students. learningsupport@gsa.ac.uk

Student Counselling Service

A confidential service offering professional counselling about personal or academic related issues. counselling@gsa.ac.uk



Advice for Looked After Young People and Carers

At The Glasgow School of Art, we are committed to supporting Carers and young people with experience of care who have applied or who are thinking about applying to the GSA and we can provide confidential advice on the opportunities and support available.

Contact welfare@gsa.ac.uk for more information.

Young people with experience of care can also access information and support from Who Cares Scotland: www.whocarescotland.org and the Who Cares Trust: www.whocarestrust.org.uk

University Of Glasgow

All GSA degree programmes are validated by the University of Glasgow. Established in 1451, the University of Glasgow is a member of the prestigious Russell Group of leading UK research universities and a founder member of Universitas 21, an international grouping of universities dedicated to setting worldwide standards for higher education. www.gla.ac.uk

Collaboration with Scottish Ballet Interaction Design student Pawel Kudel

A groundbreaking digital dance installation has been created by Pawel Kudel, who has worked closely with Scottish Ballet dancer and choreographer Sophie Laplane. Together they produced an experimental art installation born out of a dialogue between technology and dance. The installation was presented at Dance International Glasgow. tinyurl.com/scottishballetkudel

Below:
Caseroom
books, GSA

Entry Requirements

Entry to GSoFA Singapore is dependent on the receipt of a Diploma from one of Singapore's Polytechnics. Eligible diplomas are subject to change, and applicants are advised to check the website before making an application. The GSA is interested in interdisciplinary practices and cross-fertilisation, and welcomes applications from all Diploma qualified students with an interest in contemporary design issues and studies. Applicants from other diplomas not listed will be considered on a case-by-case basis

BA (Hons) Communication Design: Nanyang Polytechnic

- Digital Media Design
- Interaction Design
- Mass Media Management
- Motion Graphics & Broadcast Design
- Visual Communication

Ngee Ann Polytechnic

- Advertising & Public Relations
- Arts Business Management
- Animation & 3D Arts
- Film, Sound & Video
- Mass Communication
- Multimedia & Animation

Republic Polytechnic

- Mass Communication
- Media Production and Design

Singapore Polytechnic

- Creative Media Design
- Digital Animation
- Media & Communication
- Visual Communication & Media Design
- Visual Effects & Motion Graphics

Temasek Polytechnic

- Communication Design
- Digital Film & Television (formerly known as Moving Images)
- Interactive Media Design
- Visual Communication

BA (Hons) Interior Design: Nanyang Polytechnic

- Animation
- Digital Game Art & Design
- Digital Visual Effects
- Game Development & Technology
- Industrial Design
- Interactive Design
- Motion Graphics & Motion Design
- Space & Interior Design
- Visual Communication

Ngee Ann Polytechnic

- Animation & 3D Arts
- Horticulture & Landscape Management
- Landscape Design & Horticulture
- Product Design & Innovation
- Sustainable Urban Design & Engineering

Republic Polytechnic

- Arts and Theatre Management
- Design for User Experience
- Game Design
- Interactive and Digital Media
- Media Production and Design
- Sonic Arts

Singapore Polytechnic

- Architecture
- Digital Animation
- Experience & Product Design
- Game Design & Development
- Landscape Architecture
- Interior Design
- Visual Communication & Media Design
- Visual Effects & Motion Graphics

Temasek Polytechnic

- 3D Interactive Media Technology
- Apparel Design & Merchandising
- Communication Design
- Digital Film & Television
- Game Design & Development
- Interior Architecture & Design
- Environment Design
- Product & Industrial Design
- Retail & Hospitality Design

Fees and Finance

Tuition fees vary depending on whether students are Singapore citizens, permanent residents of Singapore, or international students. Detailed information on tuition fees, grants, and other financial assistance is available on the Singapore Institute of Technology (SIT) website: singaporetech.edu.sg/tuition-fees-grants

Making an Application

Applications should be made through Singapore Institute of Technology, and consist of a completed application form, digital portfolio of 20 images, and a 500 word personal statement. Applications that meet SIT's criteria will then be considered by GSA. More details on applying and the online application form are available from the SIT website: singaporetech.edu.sg/admissions-overview

About Diploma-Level Entry

The two degree programmes offered at GSoFA Singapore are diploma-level entry programmes, enabling the upgrading of Diplomas from one of Singapore's Polytechnics to a BA (Hons) degree. Years 3 and 4 at GSoFA Singapore are equivalent to Years 3 and 4 of the same programmes in Glasgow, SCQF level 10, or 240 credits, plus additional 10 credits for the overseas immersion programme. Students will graduate with the exact same award as students based at the Glasgow campuses; the degree parchment is 'campus blind', containing no mention of the physical location of study.

Crowbar Awards Success in Singapore

Ten students from GSoFA Singapore reached the finals of Crowbar Awards 2017, winning 1 gold, 5 silver and 4 bronze awards between them for creative work. www.crowbarawards.com.sg

International Students

www.gsa.ac.uk/international

Visas

At the time of publication, students from outside the EU and EEA will require a visa to study at GSA. If studying for less than 6 months (e.g. Study Abroad or Exchange students) a Short-Term Study Visa will be required. Students coming to the GSA for more than 6 months will be required to apply for a Tier 4 General Student Visa from the UK Visa and Immigration department (UKVI). EU students should refer to www.gsa.ac.uk/EUupdate

The UK Visas and Immigration UKVI website provides detailed information on the visa application process, both for Tier 4 General Student Visa and the Short-Term Study Visa: gov.uk/visas-immigration

The UK Council for International Student Affairs provides useful information on the UK immigration system: ukcisa.org.uk

If you need help with your visa application or advice about the UK's immigration law and requirements please contact our Student Welfare Service on welfare@gsa.ac.uk

Please do not rely on unprofessional immigration advice from friends or tutors who may not be properly informed. Please note that to apply for a Tier 4 General Student Visa the UKVI requires you to show evidence of £1,015 per month for up to 9 months of living expenses plus funds for the tuition fee for the first year of your programme of study at the time of your visa application. You will not be able to rely on income from potential employment in the UK to provide evidence of this. International students have no recourse to public funds (cannot apply for financial support / benefits) once they are in the UK.

You can only apply for a Tier 4 General Student Visa up to 3 months prior to your programme start date. It is a good idea to start preparing for your visa application early. To apply you will require a Confirmation of Acceptance for Study (CAS), which will be issued by the GSA Registry Office (registry@gsa.ac.uk). You will also require financial evidence, educational and English language certificates, passport photographs and translations of all documents if they are not in English.

Health

All non-EEA migrants coming to the UK for more than 6 months are now required to pay a health surcharge to ensure access to the National Health Service (NHS) on the same terms as a permanent UK resident. The surcharge for students is £150 per year, and is payable in full at the time of your visa application.

Support

In addition to the support provided for all students we also recognise that students from outwith the UK sometimes require additional support. We provide free English for Specific Academic Purposes classes for students on our programmes, and advice in applying for or extending a visa is also available to applicants from our Student Welfare Service. More details can be found on our website. www.gsa.ac.uk/welfare



Commandeur des Arts et des Lettres Douglas Gordon accepts the title

The Turner Prize winning Environmental Art alumnus accepted France's highest honour in Berlin where he lives. Only a handful of artists have received the award, which was established in 1957, and the only other Scotsman to receive the honour is the actor Sean Connery. tinyurl.com/artnewspaperdouglasgordon

2017 Margaret Tait Award MFA alumna Sarah Forrest wins award

The artist received a £10,000 commission to produce a new film work, to be premiered at Glasgow Film Festival 2018. tinyurl.com/ansarahforrest

Undergraduate Programmes A–Z

www.gsa.ac.uk/study

Architecture (BArch)

Award: BArch Architecture
UCAS code: K100

www.gsa.ac.uk/barch

The Architecture programmes of study (BArch and DipArch) are organised over five years, and delivered through two academic programmes covering design, construction, environmental science, history, sociology, economics, law and management.

Architecture (DipArch)

Award: DipArch Architecture
Apply directly to the School

www.gsa.ac.uk/diparch

This programme is designed for students who intend to enter the architectural profession, and offers intensive training in the forces acting on building, and the specific skills of the architect.

Communication Design*

Award: BA (Hons)
Communication Design

UCAS code: W213

www.gsa.ac.uk/comdes

Communication Design covers three streams; illustration, design photography and graphic design. Students explore the traditional skills of drawing, printing, photography and other graphic processes with video, sound and animation.

Fashion Design

Award: BA (Hons) Fashion Design
UCAS code: W230

www.gsa.ac.uk/fashion

This programme aims to create assured fashion design graduates with clear individual and creative identities, specialising in either menswear or womenswear. Students honour and learn from fashion traditions, learning to balance originality of concept with design viability.

Fine Art Photography

Award: BA (Hons) Fine Art
UCAS code: W640

www.gsa.ac.uk/fineartphotography

Students studying Fine Art Photography blend conceptual, aesthetic and technological awareness to create photography in a fine art context. The use of a range of media is encouraged, including photo-mechanical, stills, video and text.

Immersive Systems Design

Award: BSc (Hons) Immersive Systems Design

UCAS code: W617

www.gsa.ac.uk/immersive

This new programme will provide graduates with a highly relevant skill set in practical software and immersive systems (Virtual Reality) development. Pathways in 3D Modelling and Games & Virtual Reality are available from 2018-19 – check the programme page for further confirmed programme pathways.

Interaction Design

Award: BDes (Hons)
Interaction Design

UCAS code: W280

www.gsa.ac.uk/interaction

Interaction Design embraces the creative possibilities opened up by new technologies. Students learn the fundamentals of code alongside visual thinking and creative problem-solving, enabling the creation of interactive virtual and physical artefacts.

Interior Design*

Award: BA (Hons) Interior Design
UCAS code: W250

www.gsa.ac.uk/interiordesign

Interior Design at the GSA is about enriching buildings to create exciting and practical environments in which people can live and work. Students use traditional methods alongside digital methods of representation, such as CAD, 3D-printing and immersive virtual-imaging.

International Foundation in Art and Design

Award: CertHE and IELTS
equivalent of minimum 6.0

UCAS code: WW12

www.gsa.ac.uk/intfoundation

This year-long programme is aimed at students whose first language is not English, and allows students from outside Europe to familiarise themselves with the culture and language of the art school studio before applying to art, design or architectural degree programmes.

Painting and Printmaking

Award: BA (Hons) Fine Art
UCAS code: W120

www.gsa.ac.uk/paintingandprintmaking

Painting and Printmaking aims to equip students with the necessary skills and expertise to realise their full creative potential, in the context of both contemporary and historical fine art practice.

Portfolio Preparation

Apply directly to the School
www.gsa.ac.uk/openstudio

The GSA's Portfolio courses enable students to develop a portfolio of work for submission to HE/FE courses in Art and Design. A range of Portfolio courses are available including part-time evening and day courses, Saturday courses, and week long Summer School courses.

Product Design

Award: BDes (Hons)/MEDES
Product Design UCAS code: HW72

www.gsa.ac.uk/productdesign

The Product Design programme focuses upon the role of the designer as the creator of objects, services and experiences. The programme includes the study of European languages, research methods from the social sciences and study in partner institutions around the globe.

Below: Case Room,
photography by
Theresa Moerman Ib



MIT Press Top ranked PhD thesis

Simulation and Visualisation PhD graduate Polina Zioga's PhD thesis was announced by a peer review committee at Leonardo (MIT Press) as one of the top-ranked abstracts for 2017. This marks the first time since 2006 that a thesis abstract from a Scottish University has been listed amongst the top-ranked work

Polina's dissertation investigated the design and implementation of multi-brain Electroencephalography (EEG)-based BCIs in the context of live cinema and mixed-media performances. Polina created the work *Enheduanna - A Manifesto of Falling*, which was the first demonstration of a live brain-computer cinema performance (CCA Glasgow, July 2015).
tinyurl.com/topabstract

Product Design Engineering

Award: BEng (Hons)/MEng Product Design Engineering Apply to the University of Glasgow UCAS code: H3W2 (BEng) H3WG (MEng)

Institution Code: G28

www.gsa.ac.uk/pde

Product Design Engineering is an award-winning degree programme, offered jointly with the University of Glasgow. Students focus on the development of innovative products to support changing and increasingly sophisticated human needs and lifestyles.

Sculpture and Environmental Art

Award: BA (Hons) Fine Art
UCAS code: W130

www.gsa.ac.uk/sculptureenvironmental

Sculpture extends beyond the conventional boundaries of object-making to encompass a wide range of contemporary processes and media. Environmental Art prepares students to develop work in relation to sites and contexts beyond the gallery.

Silversmithing and Jewellery

Award: BA (Hons)
Silversmithing and Jewellery

UCAS code: W721

www.gsa.ac.uk/silversmithingandjewellery

Silversmithing and Jewellery covers aspects of body adornment and fine metalworking from the development of original design concepts through to the finely crafted finished work.

Sound for the Moving Image

Award: BDes (Hons)
Sound for the Moving Image

UCAS code: PW33

www.gsa.ac.uk/soundmoving

This programme offers the opportunity to engage with the craft and creative practice of sound production applied to film, animation, television, new media, electronic games and visual art. Students enter directly into Year 3, articulating from HND programmes or with relevant professional experience.

Textile Design

Award: BA (Hons) Textile Design
UCAS code: W231

www.gsa.ac.uk/textile

Textile Design is concerned with the design of cloth for interiors and fashion, and is composed of four subject specialisms – print, knit, weave and embroidery. Students use traditional process and digital technology to acquire, integrate and challenge textile practices through studio-based activity and live projects.

For postgraduate programmes visit www.gsa.ac.uk/graduatedegrees

Please note that all our degree programmes are subject to alteration and applicants should consult the relevant programme pages on the GSA website before making an application.

For information about new programmes under development, please visit www.gsa.ac.uk/newprogrammes

*These programmes are also available to study at our campus in Singapore www.gsa.ac.uk/singapore

Undergraduate Programmes A-Z

本科课程设置（英文字母A-Z）
www.gsa.ac.uk/study

建筑学

授予：建筑学学士学位
 UCAS 代码：K100
www.gsa.ac.uk/barch

建筑课程的学习（BArch and DipArch）是通过五年两个部分的课程完成。教学内容包括设计、建筑、结构、环境科学、历史、社会学、经济、法律和管理。

建筑学证书

授予：建筑
 直接向格拉斯哥美术学院申请
www.gsa.ac.uk/diparch

建筑学文凭课程是为了准备将建筑作为职业来发展的学生而开设，为学生提供专业的训练，以及成为建筑师所必备的职业技能。

视觉传达*

授予：艺术学（荣誉）学士学位-视觉传达
 UCAS 代码：W213
www.gsa.ac.uk/comdes

视觉传达课程分为三个方向：插画、商业摄影和平面设计。在格拉斯哥美术学院，学生们有机会将绘画、印刷、摄影等传统技巧与其他媒介如视频、声音、动画融合在一起。

服装设计

授予：艺术学（荣誉）学士学位-服装设计
 UCAS 代码 W230
www.gsa.ac.uk/fashion

此课程旨在将毕业生培养成为男女服装设计领域优秀的独立设计师和创造性的设计师。在本课程中学生学习时装传统，以及学习如何平衡原创性以及设计可行性。

艺术摄影

授予：艺术学（荣誉）学士学位-纯艺术
 UCAS 代码： W640
www.gsa.ac.uk/fineartphotography

学习艺术摄影的学生，将在纯艺术语境下进行摄影创作，该创作将融合观念、美学以及科技等方面。学校鼓励多种媒介的使用，如照相工艺、置景、视频和文本等。

沉浸系统设计

授予：理学（荣誉）沉浸系统设计
 UCAS 代码：W617
www.gsa.ac.uk/immersive

这个新的课程将会为学生提供在一个在相关领域对特定的软件、和沉浸系统（VR虚拟现实）相关领域有更深入了解的机会。自2018-19学年开始本专业将提供几个不同的学习方向如3D建模。具体的学习方向请登录本课程的官网进行更多了解。

交互设计

授予：设计学（荣誉）学士学位-交互设计
 UCAS 代码：W280
www.gsa.ac.uk/interaction

交互设计专业探索新科技带来的任何创新可能性。学生通过视觉思维与创造性问题的训练，来进行基础代码的学习，最终设计出交互式的虚拟与真实相结合的作品。

室内设计*

授予：艺术学（荣誉）学士学位-室内设计
 UCAS 代码：W250
www.gsa.ac.uk/interiordesign

室内设计就是让建筑恢复活力、充满生机、并且能够创造一个令人兴奋而又实用的环境，供人们生活、工作。学生会学习如何将传统手段和数字化的再现方式结合，如CAD、3D打印技术和沉浸式虚拟影像等。

国际预科课程（纯艺术、设计）

授予：高等教育证书及雅思6.0同等证书
 UCAS 代码：WW12
www.gsa.ac.uk/intfoundation

该一年制课程主要针对那些非英语语言国家的学生而开设。课程将帮助来自欧洲以外国家的学生在申请纯艺、设计和建筑学位课程之前，熟悉艺术学院工作室的特殊文化、语言。

油画和版画

授予：艺术学（荣誉）学士学位-纯艺术
 UCAS 代码： W120
www.gsa.ac.uk/paintingandprintmaking

本课程旨在教授学生必要的技能和专业技术，使学生在当代和传统艺术语境中，充分认识到和挖掘出自己的创造潜力。

作品集制作课程

直接向格拉斯哥美术学院申请
www.gsa.ac.uk/openstudio

格拉斯哥美术学院的作品集制作课程，旨在帮助学生准备、制作用于申请高等艺术院校时所需提交的作品集。作品集课程包含了非全日制的夜间课程和全日制白天课程，以及周六课程和夏令营课程。

产品设计

授予：设计学（荣誉）学士学位证书/设计工程学硕士学位-产品设计
 UCAS 代码：HW72
www.gsa.ac.uk/productdesign

产品设计课程主要注重于将设计师定位成物体、服务和体验的创造者的角色。本课程还将教授欧洲语言、社会科学的研究方法，同时学生有机会在全球的合作学院进行交换学习。

产品设计工程

授予：工程学（荣誉）学士学位/工程学硕士学位-产品设计工程
 向格拉斯哥大学申请
 UCAS 代码：H3W2 (BEng)
 H3WG(MEng)
www.gsa.ac.uk/pde

备受赞誉的产品设计工程专业由本学院与格拉斯哥大学联合开设。学生将注重创新产品的开发，以支持人们不断变化、日益复杂的需求与生活方式。

雕塑和公共艺术

授予：艺术学（荣誉）学士学位-纯艺术
 UCAS 代码：W130
www.gsa.ac.uk/sculptureenvironmental

雕塑课程超越了纯粹的物体制作的传统内容，涵盖了范围广泛的当代工艺流程和媒介。景观艺术培养学生超越画廊的范围，创作出与场景和环境相关的作品。

银饰&珠宝

授予：艺术学（荣誉）学士学位-银饰与珠宝
 UCAS 代码：W721
www.gsa.ac.uk/silversmithingandjewellery

银饰与珠宝专业包含了身体装饰艺术和高级金属加工两个方面，涵盖了从原创设计理念到完美的手工制作的整个过程。

影视配音

授予：设计学（荣誉）学士学位-多媒体配音
 UCAS 代码：PW33
www.gsa.ac.uk/soundmoving

本课程为学生提供创新型的声音创作实践机会，将应用于如电影、动画、电视、新媒体、电子游戏、视觉艺术等领域。申请人需要有相关行业经验或就读过HND相关课程，直接就读大三课程。

纺织设计

授予：艺术学（荣誉）学士学位-纺织设计
 UCAS 代码：W231
www.gsa.ac.uk/textile

纺织设计课程主要针对布料的内部结构以及款式，该课程有四个方向：印染、编织、纺织、刺绣。在课堂上，学生将在以工作室为基础的活动和实际项目的实践中，通过对传统技艺与数字技术的学习，来掌握、整合和挑战纺织实践。

美术学院的映射

了解更多在格拉斯哥美术学院以及格拉斯哥的学习生活请登录 www.gsa.ac.uk/edition 在线阅读GSA校刊。

作品集

格拉斯哥市

格拉斯哥美术学院是格拉斯哥市的缩影，在各方面如展览、美术馆、公园、市场、咖啡厅、和舞蹈场所中都可以体现出格拉斯哥市的文化特色。

视频：

格拉斯哥美术学院镜头之下的 格拉斯哥市
 短片由格拉斯哥美术学院校友 Cara Connolly和Martin Clark制作
www.gsa.ac.uk/newprogrammes
[Vimeo.com/55051394](https://vimeo.com/55051394)

频道

学习在格拉斯哥美术学院
 在Vimeo上观看有关格拉斯哥美术学院的学生访谈、展览信息、服装表演等节目。
[Vimeo.com/channels/523851](https://vimeo.com/channels/523851)

开放日

2017年10月26日, 星期四。
 （本科生院）
 可登陆网站注册：
www.gsa.ac.uk/gsaOPEN

研究生课程请登录
www.gsa.ac.uk/graduatedegrees 了解更多。
 请注意：我们的课程信息可能会略有变动，在递交申请前请登录对应课程的官网页面核实上面的详细信息。更多我们新课的信息，请登录
www.gsa.ac.uk/newprogrammes

标注*的课程同样在我们学校的新加坡校区开设，详情可访问 www.gsa.ac.uk/singapore

欲查看研究生课程信息，请见 www.gsa.ac.uk/graduatedegrees

请注意，所有学位课程信息会有所变动，请申请人在提交申请之前，前往官网页面查看确认。更多关于新开课程的信息请访问 www.gsa.ac.uk/newprogrammes

How to Apply

如何申请

我们欢迎英国本土以及国际学生报考格拉斯哥美术学院。请注意，申请信息时常有所变动，请在提交申请之前查看官网上的入学要求：
www.gsa.ac.uk/howtoapply

入学要求

苏格兰高等教育

设计学院、造型学院：4门考试成绩为ABBB或AABB。
建筑学院：4门考试成绩为ABBB或AABB，要求英语、数学和物理的成绩，最好有艺术成绩。

产品设计专业：4门考试成绩为ABBB或AABB，要求一门现代语言（非英语）成绩。

产品设计工程专业（BEng）：-S5：要求AAAA或AAABB，要求数学和物理成绩为A/B或B/A
-S6：申请者在获得ABBB，包括数学和物理成绩为A/B或B/A时，可能获得通知书，前提是在S6时达到AAAAA。
产品设计工程专业（MEng）：在S5结束后成绩为AAAAA，需包含数学、物理成绩。

A Levels

设计学院、造型学院：要求3门A Levels考试成绩至少为ABB，以及英国普通中等教育证书（GCSE）英语成绩为A。
建筑专业：要求3门A Levels考试成绩至少为ABB，要求数学和物理成绩，以及英国普通中等教育证书（GCSE）英语成绩为A。
产品设计专业：要求3门A Levels考试成绩至少为ABB，以及英国普通中等教育证书（GCSE）英语成绩为A，并要求现代语言（非英语）成绩。

产品设计工程专业（BEng）：要求3门A levels课程成绩至少为AAB，包含数学、物理以及英国普通中等教育证书（GCSE）英语成绩为A。

产品设计工程专业（MEng）：要求3门A levels课程成绩至少为AAA，包含数学、物理以及英国普通中等教育证书（GCSE）英语成绩为A。

其它

持IB课程证书、爱尔兰毕业证书的学生请在www.gsa.ac.uk/howtoapply上查询相关信息。非英国以及爱尔兰的国际学生请登录：www.gsa.ac.uk/international 查阅我们的国际申请指导，以了解你所在国家的同等录取资格要求。

直接入读本科第二或第三年级课程（造型学院和设计学院）
申请人需要能够向学校证明自己已经有过相当于第一年级，或前两年级的学位课程学习经历。这也许包括艺术预科类课程以及HND资格证书等。

直接入读本科第三年级课程（影视配音）

本课程仅接收大三的申请人，就读过音乐相关课程的继续教育学院或同等的HND课程亦或是具有同等学历的申请人，提供相关作品集进行申请。持有同等大学学历的学生以及通过HND课程同等级别的学生，需要在声音或音乐出品相关领域有过学习经历。直接申请的学生将会被要求以作品集的形式展示自己在音乐出品相关领域的技术。拥有相关专业领域经验的申请人同样会被要求提供作品集以及至少一封影视配音专业领域的推荐人的推荐信。

英语能力要求

学校要求所有申请人在入学前能够达到一定的英语语言标准。对于英国学生来说，这可以通过Scottish Higher或是GCSE来证明。国际学生通常需要达到一定的雅思分数——具体请查询官网要求。

UCAS

所有申请本科课程（建筑学文凭课程、作品集制作课程、交换生和海外学习课程除外）的学生都需要在UCAS上进行申请：www.ucas.ac.uk——格拉斯哥美术学院的机构代码是G43。申请产品设计工程专业的学生需要向格拉斯哥大学进行申请，代码为G28。

支持性视觉资料

所有申请人（产品设计工程专业申请除外）的学生还需要提交支持性视觉资料（电子版作品集），来完成申请的最终环节，网址为application.gsa.ac.uk，本网站上有正确上传作品集的流程指导。大多数本科课程需要在做出最终结果之前对申请人进行面试。

申请指导

更多关于申请是如何评定以及如何正确上传作品集，请参考www.gsa.ac.uk/sampleportfolios

帮助与问答

如果有申请方面的问题，请联系格拉斯哥美术学院招生办公室 - registry@gsa.ac.uk
+44 (0) 141 353 4512
[Facebook.com/qsaregistry](https://www.facebook.com/qsaregistry)

格拉斯哥美术学院北京代表处地址：北京市朝阳区将台路6号丽都A2商业大厦6层607A室
100004
电话：010—64371798 / 64375969
传真：010—64375969
Email: info@china.gsa.ac.uk
QQ:2409872156 / 1301806253
新浪微博：英国格拉斯哥美术学院中文微博
微信公众平台：英国格拉斯哥美术学院
微信号：GSA-1845

基本信息

资助

申请者可以申请一系列资助来负担学费以及生活费。学生通常需要尽早申请，而不是等到无条件录取通知书下来以后再申请。不同地区申请要求不同。

苏格兰与欧盟学生应该与苏格兰学生奖励中心 (Student Awards Agency for Scotland) 进行联系：www.saas.gov.uk

来自英国其他地区的学生（英格拉、威尔士、北爱尔兰）应该分别与下列机构联系：英格兰：www.slc.co.uk/students/student-finance-england.aspx
威尔士：www.studentfinancewales.co.uk
北爱尔兰：www.studentfinanceneni.co.uk

请注意尽管上述资助主体可能会支付你的学费，你在接受此项资助前仍被要求进行标准申请程序。这些组织将会从四月下旬开始接受申请。学生往往需要在6月底之前申请以确保资助会在下学期开始时被提供。

国际学生应与本国的资助机构联系。
British Council为国际学生提供部分财政支持：
study-uk.britishcouncil.org

请注意，想要申请T4学生签证来英国的申请人需要提供能够支付学费以及生活费的证明，以便成功申请到签证。

关于生活费、学费以及其他资助项目，详情请见：
www.gsa.ac.uk/finance

持有欧盟国家国籍的学生请注意：

基于英国的脱欧公投，对于申请2018/2019学年的欧盟区申请人，在英国脱欧后你们的学费极有可能变成国际学生学费。目前，欧盟学生依然享有本土学生学费和对其他各种费用的资助，但是这可能会因为英国的脱欧议程有所变更。更多关于2018/19学年入学的欧盟学生学费信息，将会由英国完成脱欧的时间和对应的学期决定。关于各项费用和学生会金融支持的任何必然的改变将以政府的立法为法律依托。在此背景下，我们坚定的以苏格兰政府的政策为依托，来缓和此变化为各位学生所带来的影响。更多相关信息，我们会在格拉斯哥美术学院的官网上进行更新，更多具体详情您可登录www.gsa.ac.uk/EUupdate 了解更多。

奖学金

格拉斯哥美术学院为学生提供一系列奖学金。每种奖学金评选标准各有不同，但是所有奖学金申请人都必须获得格拉斯哥美术学院的有条件或无条件录取通知书，才能进行奖学金申请。

请注意有一些奖学金可以进行学费减免，而另一些奖学金是为申请人提供部分生活费。这些并不能完全支付你的学费或是生活费。
符合条件的来自英国其他地区的学费为9250英镑的学生，以及来自于低收入家庭（家庭收入低于47000英镑）的学生可以申请格拉斯哥美术学院英国其他地区学生欢迎奖学金2000英镑。

详情请见：
www.gsa.ac.uk/scholarships
如有任何其他相关问题，请联系学生福利部门：
welfare@gsa.ac.uk

宿舍

有五所高等院校设立于此的格拉斯哥市是苏格兰最大城市，能够给学生提供最优质的住宿环境。格拉斯哥美术学院有两所学生宿舍，距离主校区Garnethill Campus只有步行几分钟的距离。

所有宿舍相关的信息以及申请表格都可以在官网上找到：www.gsa.ac.uk/accommodation

学生福利部门可以为那些想要租住私人公寓的学生提供信息与帮助，请联系
welfare@gsa.ac.uk

签证

截至本手册排版之日，来自与欧盟和欧洲经济区的以外学生到格拉斯哥美术学院学习需要申请签证。学生申请6个月以下课程（如海外学习和交换生课程）需要申请Short-Term Study Visa。申请6个月以上课程的学生需要在英国签证与移民局(UKVI) 申请Tier 4 General Student Visa。 欧盟学生签证参见 www.gsa.ac.uk/EUupdate

英国签证与移民局（UKVI）官网上有更多的关于申请签证流程、T4 General Student visa 以及Short-Term Study Visa 的详情，请查看UKVI官网：gov.uk/visas-immigration

同时英国国际学生事物委员会（UK Council for International Student Affairs）的官网上提供了更多英国移民系统的信息，您可查看：ukcisa.org.uk

如果你对申请签证流程以及英国法律有疑问，请联系学生福利部门：welfare@gsa.ac.uk
请务必不要相信非职业的任何有关签证与移民的建议与意见。

请注意在申请Tier 4 签证时，英国移民和签证管理局要求学生申请签证时能够提供支付1015磅/月，至少覆盖为期9个月的生活以及第一年学费的财政证明。国际学生在英国学习时没有任何公共资助（不可申请金融援助和救济金）。

你需要在开课前3个月内申请T4 General Student Visa。我们鼓励学生提前准备签证材料。在你申请签证时，会被要求提供来自GSA注册部 (registry@gsa.ac.uk) 的CAS、金融财产证明、学历以及语言等级证书、护照照片以及上述各项非英文材料的翻译件。

未成年保护建议

在格拉斯哥美术学院，我们一直致力于支持就业及保护未成年人的利益。对于那些正打算申请格拉斯哥美术学院的申请者，我们会提供相应的支持与保护。详情请咨询：
welfare@gsa.ac.uk。
同时可以在 www.whocaresscotland.org 和 www.whocaretrust.org.uk 上查看详细信息。

格拉斯哥大学

所有格拉斯哥美术学院的学位均由格拉斯哥大学授予。格拉斯哥大学为罗素机构成员之一，成立于1451年，是世界顶尖学府之一。www.gla.ac.uk

申请时间表

在UCAS上提交申请的日期是2017年9月15日-2018年1月15日。非欧盟学生的递交申请截止日期是6月30日。我们建议提早申请。www.ucas.com

所有申请者（产品设计工程专业除外）需要在2018年1月22日之前提交电子版作品集。完整的申请材料将会在一月份统一开始审阅，所以建议尽早上传作品集。

更多关于作品集提交、上传、更改电子版作品集图片大小等相关信息，请参考 application.gsa.ac.uk

1. 提交申请表格

在UCAS上提交申请表格	申请时间为9月15日——1月15日。（非欧盟地区申请截止日期为6月30日）
--------------	---------------------------------------

2. 提交作品集

上传作品集（产品设计工程专业除外）	作品集需在1月22日之前上传成功
-------------------	------------------

3. 申请宿舍

准备申请宿舍	如果准备申请校园宿舍，请在2017年11月至2018年5月31日之间申请
--------	--------------------------------------

4. GSA处理申请

GSA处理文字材料以及作品集	此阶段学校会审核申请材料，因此建议提早申请
----------------	-----------------------

5. 邀请参加面试

某些申请人会被邀请参加由两个老师组织的面试，20分钟左右，针对作品集以及申请兴趣进行讨论	面试将在一月末到三月中旬之间举行
--	------------------

申请流程中关键时间

UCAS在线提交申请表格时间
2017年9月15日-2018年1月15日
（非欧盟学生的递交申请截止日期是6月30日）

作品集提交时间
2018年1月22日之前
（产品设计工程专业除外）

关于如何申请、作品集上传指导、以及常见问题，请参考 www.gsa.ac.uk/howtoapply

6. 通知录取结果

申请者将会通过 UCAS 获得录取结果	学校争取在3月31日之前给出结果，但是对于有些院系，结果将会在5月初之前给出*
---------------------	---

7. 接受或拒绝

申请人可以通过 UCAS 选择接受或是拒绝 offer	如果offer在3月31日之前发下，申请人需要在5月4日之前作出选择；如果offer在3月31日之后发下，申请人需要在6月8日之前作出选择
-----------------------------	---

8. 提交宿舍申请表

提交宿舍申请表格	截止日期为2018年5月31日 17:00
----------	-----------------------

9. 提交奖学金申请表

提交奖学金申请表格	截止日期为2018年5月31日 17:00—请注意不是由格拉斯哥美术学院下发的奖学金截止日期或有不同
-----------	--

10. 提交签证申请

如果是非欧盟申请者，请提交签证申请	申请者可在课程开始前三个月内提交签证申请——2018年6月中旬。请在这个日期之前准备好所有签证材料
-------------------	---

* 请注意：上述日期会略有变动，请在递交申请前登录UCAS查询最新的申请时间表。



WHY
CARELESS
MUSIC

Smell of
Food after
business
-coming

Staff behavior
affects experience

SUB-LIMINAL

FOOD
MADE.

Cold but
door
IS
OPEN.
TO WELCOME

TEMPTATION

LACK OF
CARE =
LACK OF
PASSION

TAILORING
FOOD TO
TASTE
BUDS

Food
LOOKED
NICE

Put on
THE
SPOT

STAFF
WEARING
HEADPHONES

EATING ON
THE
NOSE

CUSTOMISING

BLAND, DECOR.
AND ATMOSPHERE
LIKE FASHIONABLE

SIT IN
CUSTOMER
EXPERIENCE

MUSIC
IMAGERY
COLOURS
SIGHTS
SERVICE
= MEMORIES

ADVERTISING
WAS
CHEAP.

DONT ASK
CUSTOMERS
TO STAY.

COAT HOOKS.

HESITATION
IN
ENTERING.

FELT
AUTHENTIC

their own
food
travelogue

23 PEOPLE
IN 10
MINUTES

Amount of
Staff

UNCOMFORT-
ABLE EATING
WITH
STRANGERS

We accept a wide range of UK and international qualifications for admission. Please note that entry requirements are subject to alteration, and applicants should check the GSA website for current entry requirements before making an application: www.gsa.ac.uk/howtoapply

Standard Entry Requirements

Scottish Highers Design, Fine Art, or Simulation and Visualisation: 4 Highers at ABBB (one sitting) or AABB (two sittings).

Architecture: 4 Highers at ABBB (one sitting) or AABB (two sittings) to include English and Maths or Physics, and preferably Art.

BDes/MEDes Product Design: 4 Highers at ABBB (one sitting) or AABB (two sittings). Normally at least one of the Highers should be a modern language other than English.

BEng Product Design Engineering: Entry from S5: AAAA or AAABB including Maths and Physics at grades A/B or B/A. Entry from S6: Applicants who achieved a minimum of ABBB including Maths and Physics at grades A/B or B/A in S5 may receive an offer based on them attaining AAAAAB by the end of S6.

MEng Product Design Engineering: AAAAA by end of S5 including Maths and Physics.

A Levels Design, Fine Art, or Simulation and Visualisation: 3 A Levels at ABB and GCSE English at Grade A.

Architecture: 3 A Levels at ABB to include Maths or Physics, and GCSE English at Grade A.

BDes/MEDes Product Design: 3 A Levels at ABB. Should normally include a modern language other than English, and GCSE English at Grade A.

BEng Product Design Engineering: 3 A Levels at AAB including Maths and Physics, and GCSE English at Grade A.

MEng Product Design Engineering: 3 A Levels at AAA including Maths and Physics, and GCSE English at Grade A.

Other Qualifications
Details on required grades for those holding/taking the International Baccalaureate, the Scottish Baccalaureate, or the Irish Leaving Certificate are available on our website.

Applicants from outside the UK and Ireland should consult our international student pages for details of accepted qualifications from specific countries: www.gsa.ac.uk/international

Direct Entry to Second or Third Year (Design, Fine Art, or Simulation and Visualisation)

You must be able to satisfy the School that you have undertaken a period of study equivalent to the first, or first and second year, of the degree programme. This may include an art foundation or HND qualification.

Direct Entry to Third Year (Sound for the Moving Image)

Entry to this programme is to year 3 only, either from FE college via articulation OR with appropriate HND or equivalent qualification and portfolio. An appropriate college qualification would be a minimum pass in a HND programme with a significant sound and/or music production element. Direct applicants will have to provide evidence of skills in sound production via a portfolio. Entry via equivalent professional experience will also require a portfolio as well as at least one reference from a practicing audio-visual professional.

English Language Requirements

We ask all our applicants to show evidence of their ability in English language before they are offered a place of study. For UK applicants this is either Scottish Higher or GCSE. International applicants are normally asked to provide an IELTS certificate with a suitable score – current requirements are listed on our website.

UCAS

All applicants (except DipArch Architecture, portfolio preparation, study abroad and exchange) applying for the GSA's undergraduate programmes should apply online at www.ucas.ac.uk – GSA Institutional Code is G43. Applicants for Product Design Engineering should apply using the University of Glasgow code, G28.

Supporting Visual Materials

All applicants (except those applying for Product Design Engineering) will need to upload Supporting Visual Materials (an e-portfolio) at application.gsa.ac.uk in order to complete the initial stage of their application. This site also contains information on how to upload images correctly.

Most undergraduate programmes conduct a portfolio interview with applicants before offering them a place.

Guidelines for Applicants

Information on how the application is assessed and samples of successful e-folios can be found at www.gsa.ac.uk/sampleportfolios

Help and Queries

For assistance in any aspect of making an application, contact our Registry team: registry@gsa.ac.uk +44 (0)141 353 4512 [facebook.com/gsaregistry](https://www.facebook.com/gsaregistry)

Tuition Fees

Tuition fees vary depending on whether you are studying an undergraduate or postgraduate degree, and where you are applying from. For up to date details on fees for students from Scotland, the rest of the UK (England, Wales and Northern Ireland), the EU and International (outside of the EU) students visit our dedicated website pages. www.gsa.ac.uk/finance

Funding

There are a number of funding sources covering tuition fees and living expenses that you may be eligible to apply for. You should apply early for your funding – you normally do not need to wait until you have an unconditional offer. Your eligibility depends on where you are applying from.

Scottish + EU Students should contact the Student Awards Agency For Scotland (SAAS) for information: www.saas.gov.uk

Students from the rest of the UK (England, Wales and Northern Ireland) should contact the relevant funding authority. Student Finance England: www.slc.co.uk/students/student-finance-england.aspx Student Finance Wales: www.studentfinancewales.co.uk Student Finance Northern Ireland: www.studentfinanceneni.co.uk

Please note that although the above funding bodies may pay your tuition fees, you are required to make an application to access this funding. All of these organisations will accept applications from late April onwards. Students normally need to have applied before the end of June to guarantee funding is in place for the start of the academic year.

International Students should check with the student funding bodies in their home country. The British Council provide some information on potential financial support for international students: study-uk.britishcouncil.org

Please note, those intending to study on a Tier 4 International Student Visa are required to provide evidence that they can pay their tuition fees and their living costs before they apply for the visa.

Details of living costs, tuition fees and additional sources of funding are available on our website at www.gsa.ac.uk/finance

Important Information for EU students

Following the UK referendum vote to leave the European Union there is a possibility that EU students enrolling in the 2018/19 academic year may become subject to international tuition fees for any years of study which follow the UK exit from the EU. Currently, EU students are eligible for "home" tuition fees and funding to meet the cost of those fees, but this may change following the UK's exit from the EU.

Future changes to the fee status of EU students enrolling in Academic Year 2018/19 will depend on the timing and terms of the UK exit from the European Union and any consequent changes to the legislation governing fees and student support. In those circumstances we are committed to working with the Scottish Government to mitigate the impact of that change for individual students. Information will be updated on the GSA website and you are advised to refer to www.gsa.ac.uk/EUupdate on a regular basis.

Scholarships

The GSA has a range of scholarships available to new students. Each scholarship has its own application criteria, however all scholarship applicants must have met the academic entry requirements for study at the GSA and hold either an Unconditional or Conditional offer letter or e-mail, which must accompany their scholarship application.

When applying for a GSA scholarship you should note that some of the scholarships offer a contribution towards tuition fees to assist you during your study at the GSA, whilst others provide a maintenance grant. The value of the scholarship does not reflect the full cost of undertaking full-time study.

Rest of the UK students who are subject to the £9,250 tuition fee and are from a low income background (household income of under £47,000) are eligible to apply for the £2,000 GSA RUK Welcome Scholarship.

Details of available scholarships, deadlines, criteria, frequently asked questions and application forms are available on the GSA website: www.gsa.ac.uk/scholarships

For information on sourcing other funding to help you whilst you are studying at the GSA, please contact the Student Welfare Service: welfare@gsa.ac.uk

Cost of Living

Based on the following breakdown, we recommend that you budget approximately £750 per month minimum (excluding entertainment) for a single student, and £1000 for a couple. For each child, add approximately £1,800 per year. The following is a rough breakdown of the estimated cost per month for a single student living in shared self-catering accommodation:

- Accommodation £350
- Bills (electricity, gas) £80
- Food £160
- Mobile phone (contract or pay as you go) £25
- Miscellaneous (clothes, toiletries, travel etc) £130
- Entertainment – variable
- Travel home – variable

Estimated costs for materials, specialist equipment and study/field trips are programme dependent, and are available on the programme pages of our website. Individual departments bulk buy some materials to save you money, and you will then be charged a set fee for usage.

You should budget for each year of your programme of study and should allow for costs over and above your fees and maintenance, particularly if expensive materials or projects are chosen. A graduation fee (subject to annual change) is also applicable to graduating students of all programmes.

Many students work approximately 15 hours a week to top up their student loan.

For information or assistance regarding part-time employment opportunities, please contact the Careers Service: www.gsa.ac.uk/careers

Application

Application Timetable

Application forms should be submitted to UCAS online from 15 Sept 2017-15 Jan 2018. The deadline for non-EU applications is 30 June, but early application is encouraged. www.ucas.com

Applicants to all programmes (with the exception of Product Design Engineering) are to submit Supporting Visual Materials – an e-folio – by 22 January 2018. Completed applications are assessed on receipt from the start of January, so early submission is encouraged.

To submit, and for help on how to upload and re-size your e-folio images, visit application.gsa.ac.uk

Application Process Key Dates

Application Form submitted to UCAS online
15 Sept 2017 -15 Jan 2018
(deadline 30 June for non-EU applications)

Supporting Visual Materials submitted to GSA
by 22 Jan 2018
(except Product Design Engineering)

For more details of how to apply, guidelines for Supporting Visual Materials, frequently asked questions, or to rescale the size of this text visit our website at www.gsa.ac.uk/howtoapply

1 Submit application form

Submit Application Form to UCAS (ucas.com)

Applications can be made from 15 September until 15 January (30 June for non-EU applications)

2 Submit supporting visual materials

Submit Supporting Visual Materials and Statement to GSA (not required for Product Design Engineering)

Supporting Visual Materials must be submitted by 22 January

3 Apply for accommodation

Work on application for GSA Halls of Residence

If you wish to stay in on-campus accommodation, you can apply between November 2017 and 31 May 2018

4 Application with GSA

GSA assesses application and visual material (if applicable) against entry requirements and supporting visual criteria (see website for details)

Completed applications are assessed on receipt. Early submission is therefore encouraged

5 Invite to interview

Selected applicants will be invited for a portfolio interview - a 20 minute discussion with two staff members about your interest in the programme and portfolio (which you bring with you)

Interviews will be held from late January - mid March

6 Informed of final decision

Applicants are informed of final decision through UCAS

The School will aim to process results by 31 March. Decisions for oversubscribed programmes or applications submitted past the deadline may be processed through UCAS until early May*

7 Accept or decline

Applicants accept (Firm or Insurance) or decline offers through UCAS

Applicants must accept or decline places by 4 May (if offered before the 31 March) or 8 June (if offered after 31 March)*

8 Submit accommodation application

Submit application for GSA Halls of Residence

The deadline for completed applications is 31 May 2018 at 5pm

9 Submit scholarship application

Submit application for GSA Scholarships

The deadline for completed applications is 31 May 2018 at 5pm – please note that scholarship deadlines from non-GSA sources will differ

10 Submit visa application

Students from outside the EU – apply for visa

You can submit your visa application from 3 months before your programme start date – so mid June 2018. You should start preparing documents for submission much earlier than this

* Please note these dates are subject to change and applicants should check with UCAS for up-to-date information before submitting an application.





Cover: Lana Ferguson, S5, Auchenharvie Academy
Left: Niamh Wright, S5, Dumbarton Academy
Overleaf: Morgan Steele, S5, Auchinleck Academy

The Glasgow School of Art
167 Renfrew Street
Glasgow
G3 6RQ

© The Glasgow School of Art 2017
Registered Charity No SC 012490
Correct as at October 2017