



Widening Participation

*Information for
Offer Holders*



First of all, well done on getting an offer from The Glasgow School of Art!

Congratulations!



Understanding Your Offer



*** Conditional Offer**

Your place is subject to you meeting certain conditions, for example achieving certain grades in your exam results. Once you have met your conditions, your offer will become unconditional.

*** Unconditional Offer**

You have already met all of the requirements for your course.

Replying to your offers



- * When you receive decisions from all of the courses you applied to, you need to reply to any offers you received.
- * To reply to your offers, sign in to [UCAS Track](#).



Replies and what they mean



* **Firm Acceptance**

Firm Acceptance should be used for the course you most want to study. You can only use this option once.

* **Insurance Acceptance**

If you firmly accept a conditional offer, then you will be given the opportunity to make an insurance acceptance as well. This should be used for your second choice course. If you do not meet the conditions of your first choice, but do for your insurance, then you will be accepted there instead.

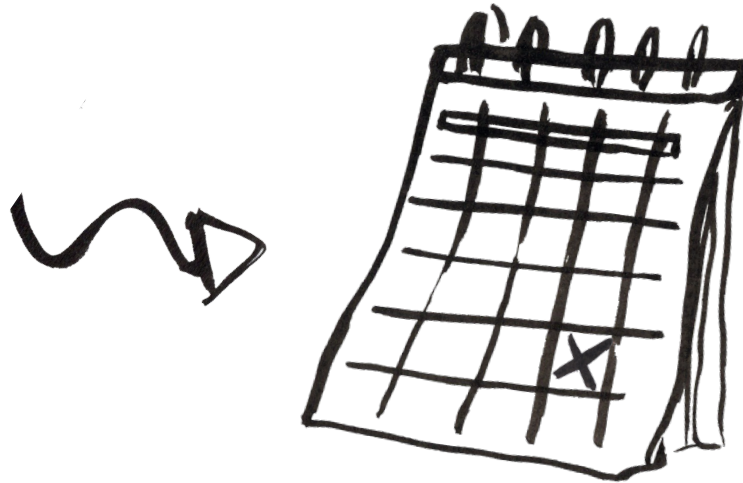
* **Decline**

Decline means you do not want to accept the offer. Once you have made your firm and insurance acceptances you must decline all other offers, You can find out more about replying to your offers on the [UCAS website](#).

UCAS Reply Dates



- * There is a deadline for replying to your offers. The date that applies to you will be viewable in your [UCAS Track](#) account. Remember to reply to your offers before this date.



Apply for funding

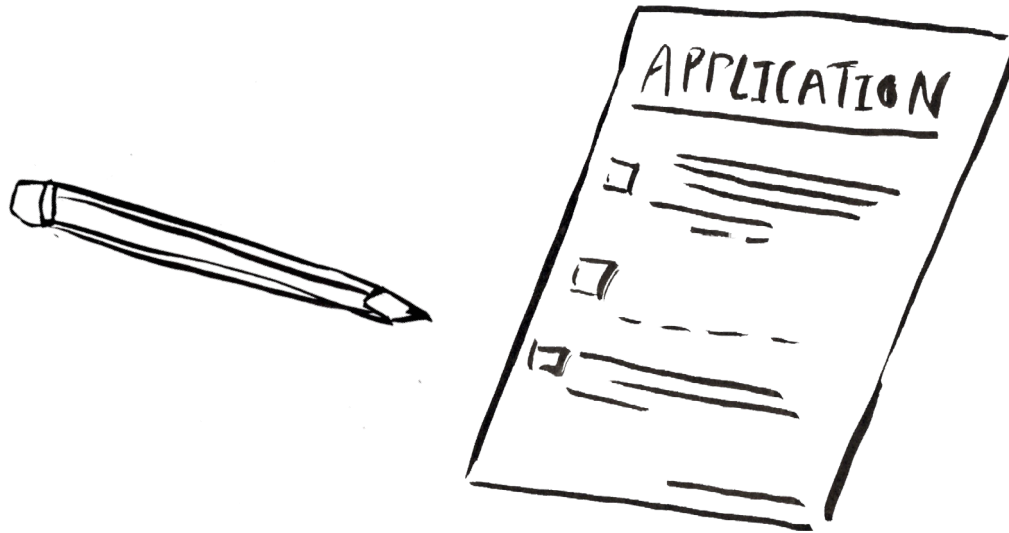


- * You should apply to [Students Awards Agency Scotland \(SAAS\)](#) to cover the cost of your tuition fees. You may also be eligible for a [bursary](#) or student loan.
- * You should apply as early as possible to make sure you get your money at the start of your first term. Do not wait for exam results or for your application to be unconditional firm before applying for funding.
- * Applications received by SAAS after 30th June may not be processed before the start of your course. Remember, your application is only valid for one academic year - you must apply every year during your studies.

Scholarships



- * A [scholarship](#) is an additional sum of money you can apply for that you do not need to pay back. There are usually specific criteria you need to meet in order to be eligible to apply. You may be able to apply for up to two scholarships per year from The Glasgow School of Art.
- * You should submit your application for a scholarship as soon as possible.



Accommodation



* **GSA student accommodation**

If you wish to stay within [GSA student accommodation](#), you are eligible to apply as soon as you have a conditional or unconditional offer. You need to have firmly accepted your offer to study at GSA to be made an offer to live within GSA student accommodation.

* **Purpose built student accommodation**

Glasgow has an excellent choice of commercially run student accommodation that you may wish to consider.

* **Private rented accommodation**

If you wish to [rent a flat](#) with other students, you should try to arrange this before the start of term.

The Student Welfare team can assist with information on finding accommodation within the city. Contact welfare@gsa.ac.uk

Learning Support



✦ The Learning Support and Development Service is available to all GSA students throughout their studies. They provide:



- Learning and study skills guides and tips [online](#).
- Learning and study skills workshops.
- Individual learning support appointments.
- Assessment and support for students with disabilities that impact on learning, including dyslexia.



Support for Students with a Disability



* Many students at GSA have [disability related needs](#). The term disability includes any of the following:



- *Long standing illness or health condition*
- *Physical impairment or mobility issues*
- *Mental health condition*
- *Social/communication impairment*
- *Sensory impairment - such as a hearing or visual impairment*
- *Specific learning difficulties - such as dsylexia, dyspraxia, ADD or ADHD*

* If you have a disability, please email learningsupport@gsa.ac.uk so that they can work with you to explore how your disability might impact on your learning and to ensure that you get the support that you need.

If you have accepted an offer on a programme of study at GSA, contact them as early as possible so they can put the support you require in place for you arrival.