

# MDes Fashion and Textiles

## Study Guide for Entry 2023-24



Ning Wang

### Programme Overview

The Master of Design in Fashion and Textiles is an advanced skills postgraduate programme designed to meet the ambitions of motivated fashion and/or textile graduates who wish to extend, develop and refine their design practice.

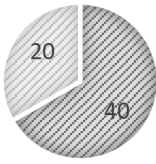
The programme welcomes two broad types of fashion design student, each of which has a characteristically different approach:

One can broadly be described as 'Textile, or surface, led' with a design approach considered to be from the 'Textile-outwards'. The other can broadly be described as 'Silhouette, or shape, led' with a design approach considered to be from the 'Silhouette-inwards'.

Textile-led fashion designers are more concerned with the surface (print, embroidery, decoration) or structure (weave) of the fabric in a garment and tend to think more in two dimensions when designing. Silhouette led designers are more concerned with the shape, cut, outline and construction of a garment and tend to think more in three dimensions when designing.

Knitwear is considered a hybrid activity as the structure of the knitted cloth and the shape of the knitted garment are considered simultaneously. The emphasis might be on knitted structures or fully fashioning.

Students on the programme are required to specialise in a *surface* or *silhouette* approach in order to give focus to and strengthen their individual area of expertise. They can express their ideas digitally, physically or a combination of both.



### Stage 1

Studio Practice 1: Origination and Investigation (40 credits)

Core Research Methods (20 credits)

## Programme Structure

The 12-month (calendar year) programme consists of three equally weighted stages. Stage 1 is delivered between September to January. Stage 2 from January to May. Stage 3 from May to September. Each stage consists of different combinations of practical, theoretical or elective courses:

Stage 1 comprises of two courses:

- Studio Practice 1: Origination and Investigation (40 credits)
- Core Research Methods (20 credits)

Stage 2 comprises of two courses:

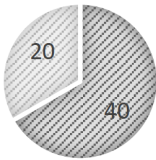
- Studio Practice 2: Experimentation and Progression (40 credits)
- Elective (20 credits)

Stage 3 consists of one course:

- Studio Practice 3: Evaluation and Resolution (60 credits)

The three Studio Practice courses are sequential. Studio Practice 1 focuses on research methods and the formation of initial ideas. This informs experimentation and development in Studio Practice 2. Studio Practice 3 culminates in the realisation of a collection and professional exit portfolio.

As well as the Studio Practice courses, students will study Core Research Methods for Design in Stage 1 and an Elective in Stage 2.



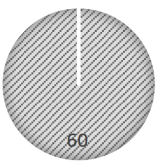
### Stage 2

Studio Practice 2: Experimentation and Progression (40 credits)

Elective (20 credits)

## Core Research Methods for Design

Core Research Methods for Design (CRM) supports students to establish frameworks for understanding how research can inform design decisions. It aims to enhance skills in communicating research through visual, physical, oral and written means. The course is formed of postgraduate students across the School of Design and includes the following disciplines; Communication Design, Interior Design, Product Design Engineering and Fashion & Textiles. The pace of delivery is varied, involving lectures, seminars and workshops for interdisciplinary plenaries, studio groups and individuals. Further details are included in the [programme and course specification](#) section of the GSA website.



### Stage 3

Studio Practice 3: Evaluation and Resolution (60 credits)

## Elective

The Postgraduate Cross-School Electives programme provides students with the opportunity to explore interdisciplinary working and learning on topics of mutual interest with students and staff from across the Glasgow School of Art. They offer students the opportunity to broaden their studies and undertake courses in subjects outside of their specialist disciplinary programme. This enables students to develop aspects of their current practice or to engage in the study of a new subject. Each academic session a suite of courses are available for students to select one to study. Further details are included in the [programme and course specification](#) section of the GSA website.

## Studio Practice Projects

### Stage 1

The curriculum in Stage 1 contains a series of sequential projects, which develop key fashion and textile design knowledge and skills. They aim to support students with the transition to masters study and life at GSA. Projects focus on research methods, drawing for fashion / textiles, and recording and reflecting upon the design process.

### Stage 2

In January, students commence a major, self-directed project which continues through until the end of Stage 3 in August. The project brief requires students to investigate and develop design ideas for a silhouette-led or surface-led fashion collection. The nature and scope of the project should reflect students individual interests, skills and experiences, as well as apply the learning gained in stage 1 of their studies.

### Stage 3

From May onwards students evaluate their progress to date in order to resolve their silhouette-led or surface-led fashion collection. Students select a route to conclude their project. These routes tailor the weighting of making and digital work to suit individual skill sets and creative interests.

In addition to the resolution of a fashion collection, students produce an exit portfolio in Stage 3. This is a professional visual, portfolio of project work which best communicates individual student strengths, skills and abilities to the professional world.

During this final stage the GSA careers advisor provides tailored sessions and resources to support students to seek out opportunities following the completion of their studies.

View recent student projects on the [Programme Padlet](#).



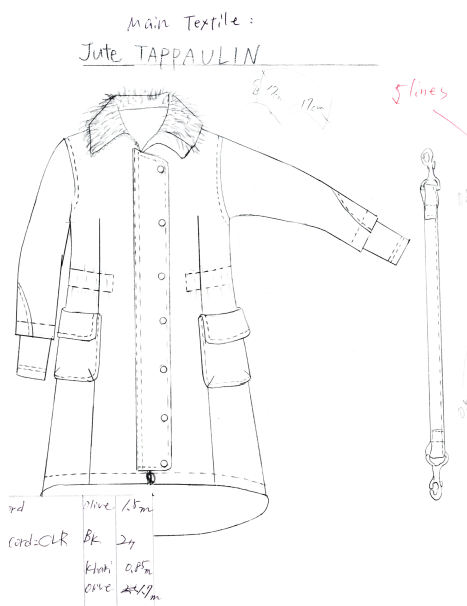
Studio

## Studio

The MDes Fashion and Textiles programme has a dedicated studio for students. This includes desks and large tables, which can be used for large and small scale project work, as well as pattern cutting.

Students are encouraged to work in the studio and workshops, and are expected to use these as their base throughout the week. Studio working encourages a peer group dynamic, as well as, learning opportunities from the student group which is of great significance to the overall student experience. Students who build communities of practice report significantly enhanced learning due to increased motivation, output and diversity in their practice.

The layout of furniture in the studio is adaptable to meet student needs and numbers. View more photos of the studio and Reid building on the [Programme Padlet](#).



Masako Morioka

## Timetable

Semester dates are published on the [GSA website](#). A weekly timetable will be issued at the outset of each stage in order that study time be planned and used effectively. The timetable includes a week-by-week overview of the programme with; term dates and holidays, projects, formative and summative assessment points.

Briefs issued at the start of each project include weekly contact with tutors and classmates. Times and arrangements for sessions will be posted on Canvas (GSA Virtual Learning Environment) in advance.

## Contact Hours

The programme is full time, core studio hours are 9am-5pm with contact with staff usually scheduled between 10am - 4pm. Students will be required to attend all taught sessions as well as progress appointments with Studio tutors on a regular basis (typically weekly).

In Stage 1, a typical week includes the following core activities;

- individual or group tutorial with a Studio Practice course tutor.
- lecture for the Core Research Methods course.

Other scheduled events might for example include; a fashion or textile workshop demonstration, drawing activity, a project briefing or critique at the end of a project. Full detail of type and number of contact hours can be found in the [programme and course specification](#) section of the GSA website.

## Self-Directed Study

In line with other taught postgraduate programmes at GSA, significant emphasis in the MDes Fashion and Textiles programme is placed on self-directed study, from project design and development, to gaining theoretical knowledge through research methods. This is further developed by the focus upon specialism, which emphasises autonomy, reflection upon personal learning, and self directed project work within a collaborative environment.

Time out with scheduled activities is for students to undertake independent study. Students are expected to take *significant responsibility* for the management of their learning. Emphasis will be placed on self-reliance and personal academic development.

## Optional Activities

The Fashion and Textiles department regularly hosts professional practice events aimed at developing students understanding of relevant contemporary practice as well as theory, research, and industry contexts. It is a time to be inspired!

Alongside this, a huge variety of events take place throughout the academic year, across the Glasgow School of Art, and in the city itself, which students are encouraged to engage with.

## Part-time work

Many students work part-time in order to afford their studies. Students are encouraged to work during evenings and weekends so that they can be



Xindi Li

available for taught sessions taking place Monday - Friday between 9am-5pm. [GSA Careers service](#) offers a range of advice and a vacancy service for finding part time work.

## Tutors

You will have contact with subject specialist tutors for each course you study. MDes Fashion and Textiles programme has core studio tutors specialising in fashion design, textile design and design process. You can find out more about them on the staff profiles section of the [Programme Padlet](#).

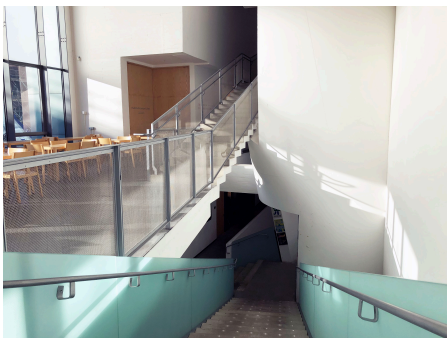
## Learning and Teaching methods

Descriptions of typical learning and teaching methods are included below.

**Tutorials:** The tutorial system is designed to provide academic support through individual appointments with staff. At these one-to-one or group appointments, individual projects and pieces of work are discussed.

**Lectures and seminars:** These are used to disseminate theoretical, contextual and historical knowledge and address specific issues underpinning practical work. Lectures also have a broad aim of generating further debate in seminars, tutorials or studio sessions or further enquiry in self-directed learning or research.

**Critique:** The critique is an important learning device used to generate peer debate regarding the generation, development or overall success of concepts, and their practical realisation. Students present work to their peers and tutors through appropriate visual and verbal means. The critique encourages students to give constructive feedback regarding each other's work. Although facilitated and guided by staff, critiques allow students to fully explore all aspects of practical submissions.



Reid Building

## Assessment

Assessment methods include peer and staff review, as well as, course work, essays, presentations and practical design projects. Formative assessment take place at key points through stage 1, 2 and 3. Feedback will identify weaknesses to be addressed and strengths to capitalise upon prior to summative assessment. Summative assessments occur at the end of each academic stage.

## Locations

Fashion and Textiles department, including workshops and studios are located in the Reid building, at the centre of the main Garnethill Campus. [Campus map](#) is available online.



Weave workshop

## Technical staff and facilities

Workshops are practical classes and can range from I.T. sessions in which students are introduced to specialist software, to pattern cutting and construction classes where students learn to prototype garment ideas.

Well-equipped Fashion and Knit workshops with industrial machines such as over locker, cover stitch, fusing press, steam iron, leather machine, buttonholer, domestic and industrial knitting machines and linkers. There is also a large repository of resources online offering instruction and support.

There are specialist technicians dedicated to the Fashion workshop. Each textile specialist area of Print, Knit, Weave and Embroidery has its own individual well-equipped workshop and dedicated full time technical support.

Workshops are supervised by technical staff between the hours of 9am–5pm. There are also GSA wide workshops such as a 3D workshop for wood and metal, laser cutting and a digital media studio with a variety of IT equipment.

[Take a virtual tour of GSA workshop facilities.](#)

## Class size

Glasgow School of Art is small specialist institution and one of the few remaining independent art schools the United Kingdom.

Cohort sizes are small. As an average the MDes Fashion and Textiles cohort has between 16 - 25 students hailing from different parts of the world. The total number of students can vary each year.

The School of Design postgraduate community has approximately 150 students studying MDes Interior Design, MDes Communication Design / Graphics / Illustration / Photography and MSc Product Design Engineering. During your studies, you will have opportunities to meet and study alongside fellow postgraduate students from across GSA with various backgrounds and specialisms.

## Graduate Destinations

Graduates of the programme set up on their own label (e.g. Tommy Zhong, Juliette Botterill Millinery) or can be found at Luxury Fashion and Accessory labels such as Ralph Lauren, Celine, Roksanda and LOEWE. Others work for brands such as Tommy Hilfiger and Urban Outfitters or in Fashion Graphics, PR, Marketing, Brand development and consultancy or as costume designers, colourists and stylists. Many go on to teach in higher education institutions across the world.

View detail of graduate destinations on the [Programme Padlet](#).



Chao Tzu-Chen

## Internships

Many students undertake internships prior to commencing study or at the end. Students staying in the UK on a visa often undertake internships at the end of their studies prior to their visa expiring. Due to the intensive nature of studying a one-year master's programme students are discouraged from undertaking internships during their studies.

Students and graduates can access the [GSA Careers service](#) which offers a range of professional practice sessions, one to one guidance, and a vacancy service.

## Postgraduate Showcase

Following completion of academic programmes, the Glasgow School of Art presents an exhibition of work by graduating students for showcase purposes. The exhibition usually takes place in September.

The format of the exhibition for MDes Fashion and Textiles may be static, moving, physical, digital or a combination of these. Previous exhibitions can be found on the [GSA Flickr page](#) and [Postgraduate Degree Show website](#).

## Award

Upon successful completion of the programme graduates are awarded a *Master of Design in Fashion and Textiles*. GSA degree programmes are validated by the University of Glasgow. Established in 1451, the University of Glasgow is a member of the prestigious Russell Group.

### Why is the qualification called a MDes as opposed to the more familiar MA?

In Scotland, the degree of Master of Arts (MA) typically refers to an undergraduate degree offered by the ancient universities of Scotland (the Universities of St. Andrews, Glasgow, Aberdeen and Edinburgh). Master of Design (MDes) or Master of Fine Art (MFA) are therefore used to distinguish a Postgraduate Masters qualification.

## Fees and Funding

### Tuition fees

Fees are listed in the [fees, funding and finance section](#) of the GSA website.

### GSA Scholarships

The Glasgow School of Art has scholarships available to new students who are starting postgraduate study in academic session 2023/24. If you have a conditional or unconditional offer of study you are eligible. If you wish to apply to the scholarship programme, you must have your application complete for the Standard 1 or Standard 2 rounds. This will ensure you have received an offer in advance of the scholarship application deadline at the end of May. Full advice on [scholarships](#) is available on the GSA website.

## Entry Requirements

Applicants' will be considered for admission who have achieved an educational level equivalent to an Honours degree. Normally applicants will be expected to have achieved a first class or upper second class Honours Degree in Textile Design (with a strong fashion bias) or Fashion Design.

Consideration will also be given to high calibre candidates from other relevant backgrounds if they can demonstrate:

- An equivalent academic qualification,
- Professional qualifications, equivalent to an Honours Degree,
- A combination of professional qualifications and experiential learning.

The Glasgow School of Art (GSA) expects all students to demonstrate proficiency in the English language, which for UK students is normally shown by a pass in Higher or GCSE English. International students are required to evidence their English language proficiency by completing an IELTS for UKVI (Academic) test taken at a UKVI approved test centre. MDes Fashion and Textiles requires an IELTS score of 6.5 overall, with a minimum of 6.0 in each component.

Further information about entry requirements can be found on the [How to Apply](#) webpage on the GSA website.

## Application Key Dates

Your application to study for a postgraduate taught degree at GSA is in two parts:

1. Application form and personal statement
2. Digital portfolio of work

Complete applications will be processed in four rounds: Early, Standard 1; Standard 2 and Late. See table below for key dates. We guarantee to review all complete applications received by the Standard 1 deadline date of 27 January 2023. Start an application on the [How to Apply](#) webpage on the GSA website.

Round	Deadline to apply	Interviews take place	Decision on application
Early	11 November 2022	28 November - 2 December 2022	20 January 2023
Standard 1	27 January 2023	20 February - 3 March 2023	10 March 2023
Standard 2	10 March 2023	3 April - 21 April 2023	28 April 2023
Late	9 June 2023	3 July - 14 July 2023	21 July 2023





Xinwei Xiang



Yanqi Wang

## Application Guidance

Your complete application will be numerically scored against specific assessment criteria. It is important to know what this assessment criteria is, and you should try to respond to this criteria when creating your digital portfolio, writing your personal statement, and preparing for interview.

Guidance on the assessment criteria, preparing your application, and for an interview, is available on GSA website online through the web-links below.

- [Preparing your digital portfolio](#)
- [Preparing your personal statement](#)
- [Preparing for interview](#)

## GSA pre-session course

GSA's Pre-session English course called [English for Creative Disciplines](#) is recommended to applicants for whom English is not their first language. Previously students have spoken highly of the pre-session course stating that it has supported them to become more familiar with art and design terminology and teaching methods, GSA online learning platforms, as well as helping with the transition to life in Glasgow.

## Life in Glasgow

Glasgow is a great city to live and study. A short film introducing Glasgow's spaces, events, and community can be found [here](#) on Vimeo. You can also explore our '[Life in Glasgow](#)' Padlet for things to see and do in the city.

## Open Days

GSA offers a range of opportunities throughout the year to get the right application information at the right time, online and in person.

## Staying Connected

We recommend following the Fashion and Textiles department on Facebook and Instagram to find out more about daily life as a fashion and textiles student at GSA, as well as hearing about our news, upcoming events and current projects.

- [Programme Padlet](#)
- Facebook: [GSA Fashion+Textiles /// stuff to share ///](#)
- Instagram: [gsafashiontextiles](#)

## Further information

For more information you are welcome to contact, Professor Jimmy Stephen-Cran, Head of Department and Programme Leader [J.Stephen-Cran@gsa.ac.uk](mailto:J.Stephen-Cran@gsa.ac.uk)