

MDes Interior Design

Guide Study for Entry 2023/24



Image: Yuhang Yang

Programme Overview

Summary Programme Structure

The programme is delivered in three stages, with a 20 credit structure, 60 credits per stage. Stage one and two consist of 40 credits of Studio work with Core Research Methods (Stage 1) and Electives (Stage 2) both making up the remaining 20 credits per respective stage.

Interior Design historically occurred in a hinterland loosely occupied by architects, shopfitters and decorators. It has only relatively recently begun to assert itself as a discreet profession, with trained practitioners and informed clients. As the practice has matured, the UK has become firmly established as one of its international centers, for both the practice, study and critique of the subject.

The MDes in Interior Design is a logical extension of this context. It operates a subject-centred approach and aims to create advanced practitioners by acting as a bridge between the delineated and the uncharted. It provides the opportunity for deep exploration free from the confines of practice. It encourages investigation into emerging aspects of the discipline where carefully directed research within these areas has led some graduates to further investigation at PhD level.

Students develop a reflective portfolio of work to a professional standard. Emphasis is placed on the exploration of fundamental issues facing the subject, the value of appropriate levels of technological intervention, and an understanding of the importance of disciplinary autonomy as well as inter-disciplinary dialogue.

Interior Design at both undergraduate and postgraduate level at GSA takes place in a Design School context within a Small Specialist Institution (SSI) which is also an Art School, it seeks to use speculation and critique as a tool to enhance the creation of high quality interior design.

Content is delivered by a wide range of practitioners with experience across key subject areas. Staff contributing to the programme combine practice, pedagogy and broad-ranging research interests and, usefully, the PG and UG studios are adjacent to each other which affords participation in mutually beneficial events.

The aims of the programme are to enable students to:

Engage with the theoretical underpinnings and the language of interior design through lectures, seminars, viewings and project work and develop an understanding of the contextual and historical evolution of interior design practice and techniques and relate these to current philosophies and best practice in the field

Investigate the conceptual and aesthetic basis of current interior design methodologies through the evolution and realization of work, both individual and group-based

Develop and demonstrate an understanding of research methodologies and realisation processes within the field of interior design

Expand the existing disciplinary boundaries of design practice through the application of design-led innovations in technology, social interaction and industrial practice through the development and realisation of challenging, concept-driven research projects

Develop a research project that allows exploration of individual research interests, theoretical debates and professional models of contemporary design activity

Acquire and demonstrate an understanding of professional practice within the field of interior design across a variety of subject fields and articulate this through a practical research project and/or thesis submission

The full programme specification for MDes Interior Design can be found here <https://www.gsa.ac.uk/media/1995417/MDes-Interior-Design-2023-24.pdf>

Course Specifications can be found here <https://www.gsa.ac.uk/about-gsa/key-information/our-structure/academic-services/programme-course-specifications/course-specifications-2023-24/>

Entry Requirements

Applicants should normally have a good honours degree in interior design, or equivalent professional practice. However, applications from individuals from other design backgrounds (graphic design, for example) will be considered on their own merits.

The admissions requirements for the MDes in Interior Design are

- Completed Online Application Form
- Digital Portfolio
- Statement of Intent (a concise critical self-evaluation of your work and the reasons for wishing to join the programme at GSA, approx. 500 words)
- Evidence of Academic Qualifications (Certified photocopies/Transcripts)
- Academic References x 2
- Evidence of English Language Proficiency e.g. IELTS (if appropriate)
- Copy of Passport (if appropriate)

Candidates will be selected for a place on the programme on the basis of:

- meeting the minimum entry requirements specified above
- demonstrating the appropriateness of the programme for their personal
 - intellectual and creative development,
 - showing critical awareness, imaginative thinking, and an understanding of the challenges of postgraduate study in their personal statement;
 - the quality of the portfolio of work, which must be of a suitable standard for masters level study;
 - demonstrating the potential to contribute to the group dynamic of the programme.

All students will have to provide evidence of English language proficiency when applying.

Students who require a Tier 4 visa to study in the UK must meet one of the following requirements in order to gain entry:

- IELTS for UKVI Academic with an overall score of 6.5 with a minimum of 6.0 in all components;
- complete an acceptable Pre-sessional English Language Programme taught from within the UK with an outcome that equates to the IELTS scores as stated above.

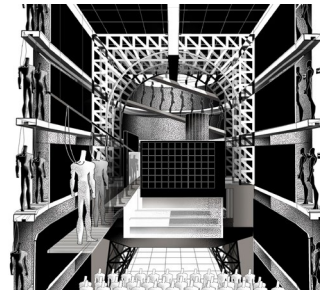


Image: Yanqiu Zhou

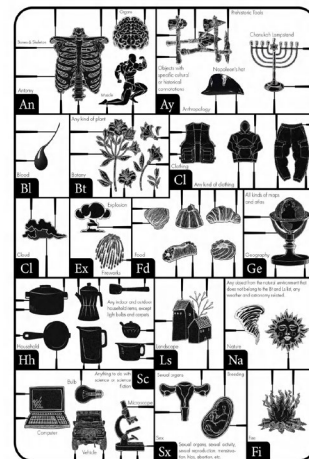


Image: Kesong Cui

Students who have a degree from an English speaking country, or are a national of an English speaking country as listed in the UKVI Guidance, may use this as proof of English language ability.

Further information about entry requirements can be found on the [How to Apply](#) webpage on the GSA website.

Application Key Dates

Your application to study for a postgraduate taught degree at GSA is in two parts:

1. Application form and personal statement
2. Digital portfolio of work

Complete applications will be processed in four rounds: Early; Standard 1; Standard 2 and Late. See table below for key dates.

We guarantee to review all complete applications received by the Standard 1 deadline date of 26 January 2024. After this date, the programme can become full and close to applications in advance of the Standard 2 and Late rounds. Early application is therefore encouraged to avoid disappointment.

Start an application on the [How to Apply](#) webpage on the GSA website.

Round	Deadline to apply	Interviews take place	Decision on application
Early	10 November 2023	27 November–08 December 2023	08 December 2023
Standard 1	26 January 2024	19 February - 02 March 2024	08 March 2024
Standard 2	08 March 2024	01 April - 19 April 2024	26 April 2024
Late	07 June 2024	01 July - 12 July 2024	19 July 2024

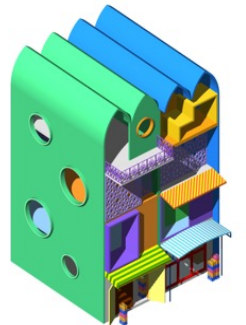
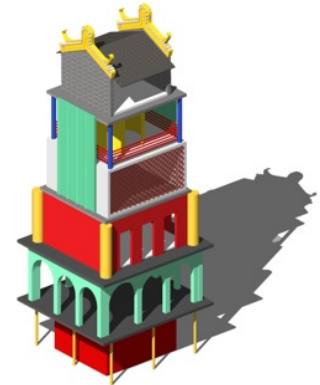


Image: Ferretti Wu

Application Guidance

Your complete application will be numerically scored against specific assessment criteria. It is important to know what this assessment criteria is, and you should try to respond to this criteria when creating your digital portfolio, writing your personal statement, and preparing for interview.

Guidance on the assessment criteria, preparing your application, and for an interview, is available on GSA website online through the web-links below.

- [Preparing your digital portfolio](#)
- [Preparing your personal statement](#)
- [Preparing for interview](#)

GSA pre-session course

GSA's Pre-session English course called [English for Creative Disciplines](#) is recommended to applicants for whom English is not their first language.

Previously students have spoken highly of the pre-session course stating that it has supported them to become more familiar with art and design terminology and teaching methods, GSA online learning platforms, as well as helping with the transition to life in Glasgow.

Award

Upon successful completion of the programme graduates are awarded a Master of Design in Interior Design. All GSA degree programmes are validated by the University of Glasgow. Established in 1451, the University of Glasgow is a member of the prestigious Russell Group of leading UK research universities.

Why is the qualification called a MDes as opposed to the more familiar MA In Scotland, the degree of Master of Arts (MA) typically refers to an undergraduate degree offered by the ancient universities of Scotland (the Universities of St. Andrews, Glasgow, Aberdeen and Edinburgh). Master of Design (MDes) or Master of Fine Art (MFA) are therefore used to distinguish a Postgraduate Masters qualification.



Image: Xin Zhang
Interactive series of spatial explorations (click on the images)

Programme Structure

The 12-month (calendar year) programme consists of three equally weighted stages.

Stage 1 is delivered between September to January. Stage 2 from January to May. Stage 3 from May to September. Each stage consists of different combinations of practical, theoretical or elective courses:

Stage 1 comprises of two courses:

- Interior Design 1: Interface Context And Cooperation (40 credits)
- Core Research Methods (20 credits)

Stage 2 comprises of two courses:

- Interior Design 2: Critical Surveying Scope And Intention (40 credits)
- Elective (20 credits)

Stage 3 consists of one course:

- Interior Design: Personal Project (60 credits)

During the final stage of the programme students are expected to generate their own bibliography drawn from and augmenting that recommended by the programme in the prior two stages.

Stage 1
40 Credits

CRM
20 Credits

Stage 2
40 Credits

Elective
20 Credits

Stage 3
60 Credits

Core Research Methods for Design

Core Research Methods for Design (CRM) supports students to establish frameworks for understanding how research can inform design decisions. It aims to enhance skills in communicating research through visual, physical, oral and written means. The course is formed of postgraduate students across the School of Design and includes the following disciplines; Communication Design, Interior Design, Product Design Engineering and Fashion & Textiles. The pace of delivery is varied, involving lectures, seminars and workshops for interdisciplinary plenaries, studio groups and individuals. Further details are included in the [CRM course specification section](#).

Elective

The Postgraduate Cross-School Electives programme provides students with the opportunity to explore interdisciplinary working and learning on topics of mutual interest with students and staff from across the Glasgow School of Art. They offer students the opportunity to broaden their studies and undertake courses in subjects outside of their specialist disciplinary programme. This enables students to develop aspects of their current practice or to engage in the study of a new subject. Each academic session a suite of courses are available for students to select one to study. Further details are included in the [programme specification section](#) of the GSA website.

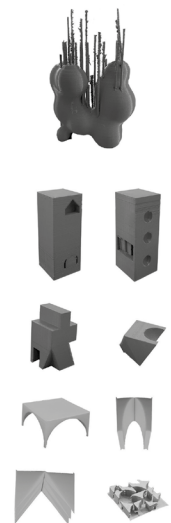


Image: Ashutosh Sharma

Stage 1 – Studio Project

The programme aims at Stage 1 are designed to allow students the opportunity to acquire and understand the key principles of theory, research and practice within the field of interior design. Students successfully completing this stage of the programme can advance to Stage 2 (PG Dip).

Stage 2 – Studio Project

The programme aims at Stage 2 are designed to build upon and develop a greater understanding of the production processes and craft skills as well as the conceptual and research components acquired in Stage 1. Students will be expected to develop a proposal of study outlining their intended area of research at Masters Level. Students successfully completing this stage of the MDes can advance to the Masters stage, Stage 3.

Stage 3 – Studio Project

Stage 3 programme aims are designed to offer the student the opportunity to develop a practiced project that demonstrates a conceptually considered, research-driven understanding of the theory, methodologies and practicalities of interior design within a real world context. Students at this stage of the programme, in consultation with design staff, can elect to work either individually, in a group or with an external organisation.

Studio Project Briefs and Timetable

Briefs are issued at the start of projects and include aims, learning outcomes, assessed outputs and timetables/key dates, suggested reading lists and online resources and should be referred to frequently during the project.

be referred to frequently during the project. Academic and visiting staff contact time is made explicit. Semester dates are published on the GSA website. A weekly timetable will be issued at the outset of each stage in order that study time be planned and used effectively. The timetable includes a week-by-week overview of the programme with; term dates and holidays, projects, formative and summative assessment points.

Student - Staff Contact Time

Contact time may be with academic and visiting staff and may include tutorials, group tutorials, briefings, lectures or demonstrations in workshops. Contact time will vary during the term and the academic year depending on the nature of the project.

Students will normally see academic staff on two to three scheduled days per week; this may be individually or as part of a group.

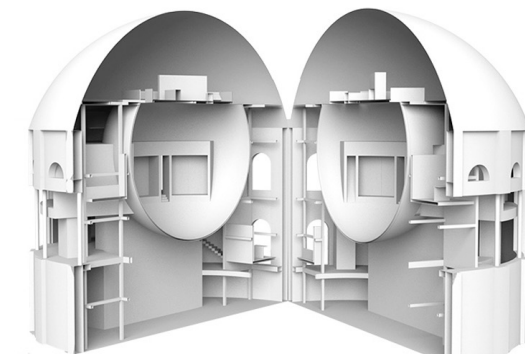


Image: Marianna Kapsimall

Learning and Teaching Approaches:

Students will be expected to take significant responsibility for the management of their learning. Emphasis will be placed on self-reliance and personal academic development. The principle teaching strategies employed on this programme are:

- Self-Directed Learning and Research

In line with other taught postgraduate programmes at GSA, significant emphasis in the Interior Design programme is placed on self-directed study, from project design and development, to gaining theoretical knowledge through traditional research methods.

- Lectures and Seminars

Lectures and seminars are used to disseminate theoretical, contextual and historical knowledge and address specific issues underpinning practical studio work. Lectures also have the broad aim of generating further debate in seminars, tutorials or studio sessions or further enquiry in selfdirected learning or research.

- Design Workshops / Studio Sessions

Design workshops are practical classes in which ideas from lectures and seminars may be tested out, or new concepts introduced and explored. These may vary from IT sessions in which students are introduced to particular pieces of software, to practical modelling classes in which prototypes are designed and roughed. Depending on the focus of the workshop, students may work independently or in groups.

- Critiques

The critique (or 'crit') is an important learning device used to generate peer debate regarding the overall success of concepts, and their practical realisation within the context of a project brief or proposal. Students present work to their peers and tutors through appropriate visual and verbal means (models, portfolios, screen based presentations and so on). The crit enables the development of key presentation skills, and encourages students to give constructive feedback on others' work. Although facilitated and guided by staff, critiques allow students to fully explore all aspects of practical submissions.

- Tutorials

The tutorial system is designed to provide academic support through individual meetings with staff. At these one-to-one meetings, individual projects and pieces of work are discussed, as well as progress on the programme overall. Tutorials are also a means where feedback from students.

Assessment

Assessment methods include peer and staff review, as well as, course work, essays, presentations and practical design projects. Formative assessment take place at key points through Stage 1, 2 and 3 and Summative assessments occur at the end of each academic stage. Formative and summative assessment feedback operates to guide students in improving their work, including interpersonal skills, formal presentation abilities, and academic writing and research

Academic Tutors

You will have contact with all tutors for during you study. MDes Interior Design programme has three core studio tutors specialising in design. You can find out more about them, as well as the Head of Department and Programme Leader, on the staff profiles section of the Programme Padlet.

Graduate Destinations

Interior Design at GSA is highly rated by collaborators and employers, and is regarded as one of the best suite of programmes of its kind in the UK. It has particular strengths in retail, health-care, leisure and workplace design and strong links to industry. Alumni are currently/recently employed in major practices in the UK and Europe; Middle East and Gulf region; Asia and North America. Graduate currently work in practices such as Graven, Kapsimali Architects, Muji, Bo Concept, Studio Sofield, Surface Matter, Kengo Kuma and WATG (Singapore), others have embarked on academic careers or have pursued research paths at PhD level.

Graduate Showcase

Following completion of academic programmes, the Glasgow School of Art presents an exhibition of work by graduating students for showcase purposes. The exhibition is called Graduate Showcase and usually takes place in August / September. The format of the exhibition for MDes Interior Design s may be static, moving, physical, digital or a combination of these. Previous exhibitions can be found on the [GSA Flickr](#) page and [Postgraduate Showcase 22-23 website](#).

Fees and Funding

- Tuition fees
Programme tuition fees are listed in the [fees, funding and finance](#) section of the GSA website.
- Extra Course costs
You should budget for 12 months of study, and allow for costs over and above your fees and maintenance, particularly if expensive materials or projects are chosen.
- GSA Scholarships
The Glasgow School of Art has scholarships available to new students who are starting postgraduate study in academic session 2023/24. If you have a conditional or unconditional offer of study you are eligible. If you wish to apply to the scholarship programme, you must have your application complete for the Standard 1 or Standard 2 rounds. This will ensure you have received an offer in advance of the scholarship application deadline at the end of May. Full advice on [scholarships](#) is available on the GSA website.

Life in Glasgow

Glasgow is a great city to live and study. A short film introducing Glasgow's spaces, events, and community can be found here on [Vimeo](#). You can also explore our 'Life in Glasgow' Padlet for things to see and do in the city.

Follow us online

We recommend following the Interior Design department on Instagram to find out more about students' projects and upcoming events.

- Website: www.idgsa.co.uk
- Instagram search for: [_idgsa](#)

Open Days

GSA offers a range of opportunities throughout the year to get the right application information at the right time, online and in person. A full list of upcoming events at GSA, online and around the world is available on GSA website. For more information you are welcome to contact, Thomai Pnevmonidou, Programme Leader, t.pnevmonidou@gsa.ac.uk and Susan Lid-Lee, Admissions Coordinator, s.lee-kidd@gsa.ac.uk

Further Information

For more information you are welcome to contact,
Thomai Pnevmonidou, Programme Leader MDes Interior Design, t.pnevmonidou@gsa.ac.uk



Video: Yuhang Yang (click on the image to watch the video)